



Society of Mining Professors Ankara 2005

Hans de Ruiter



PROGRAMS 1989

RSM

TUD

Introduction
Mineral
Study in the
World in the
1980s
Health and
Environment
Mineral
Industry
Study in the
1980s
Study



PROGRAMS 1996

EMC

RSM

TUD

HUT

RWTH

INTRODUCTION
MINERAL
STUDIES IN DEN
WORLDWIDE
PROGRAM
SCIENTIFIC AND TECHNICAL
ADVANCEMENTS
MINERAL
INDUSTRY
MINERAL
INDUSTRY
MINERAL
INDUSTRY



PROGRAMS 1998

EMC EMEC

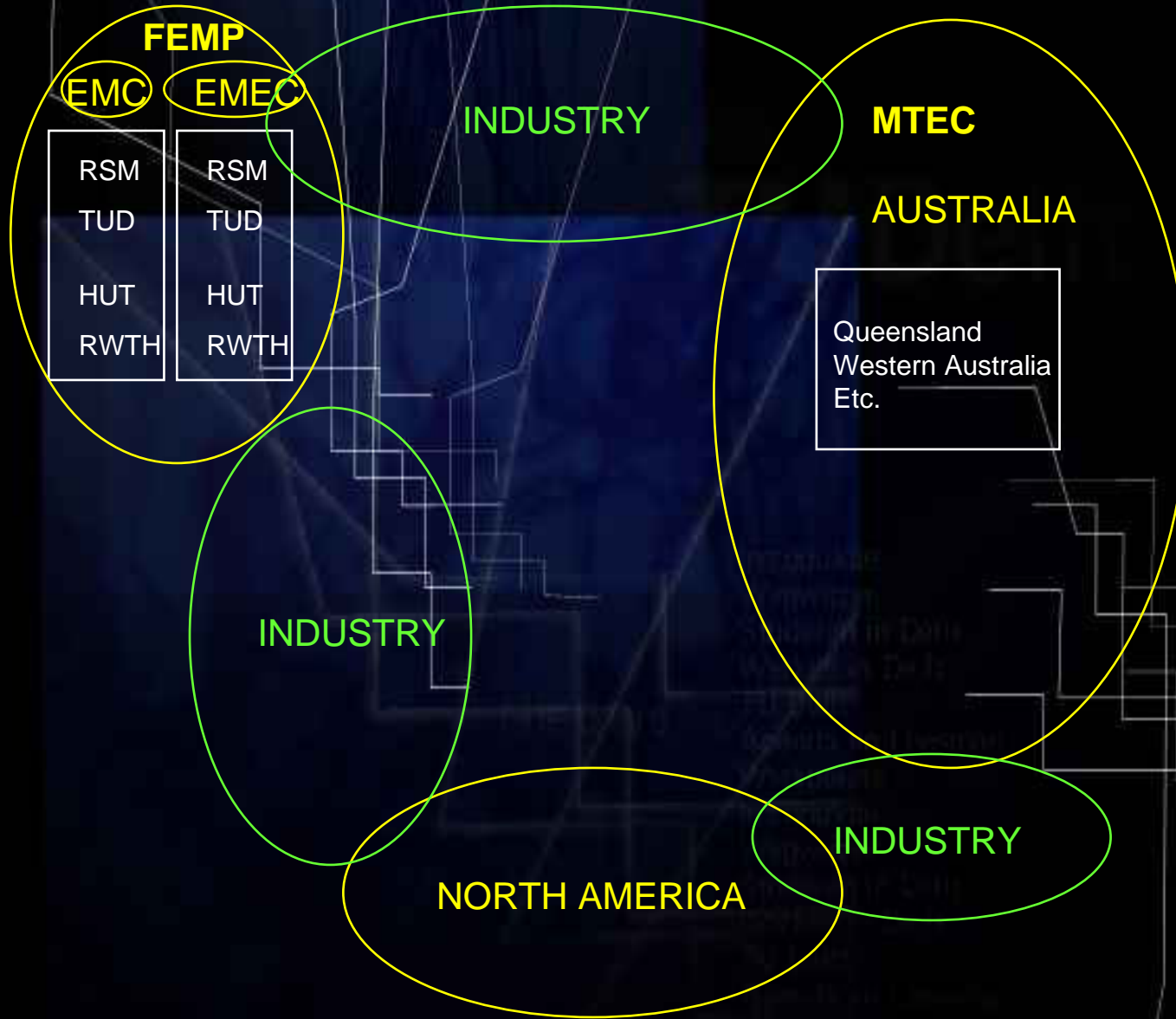
RSM	RSM
TUD	TUD
HUT	HUT
RWTH	RWTH

AUSTRALIA

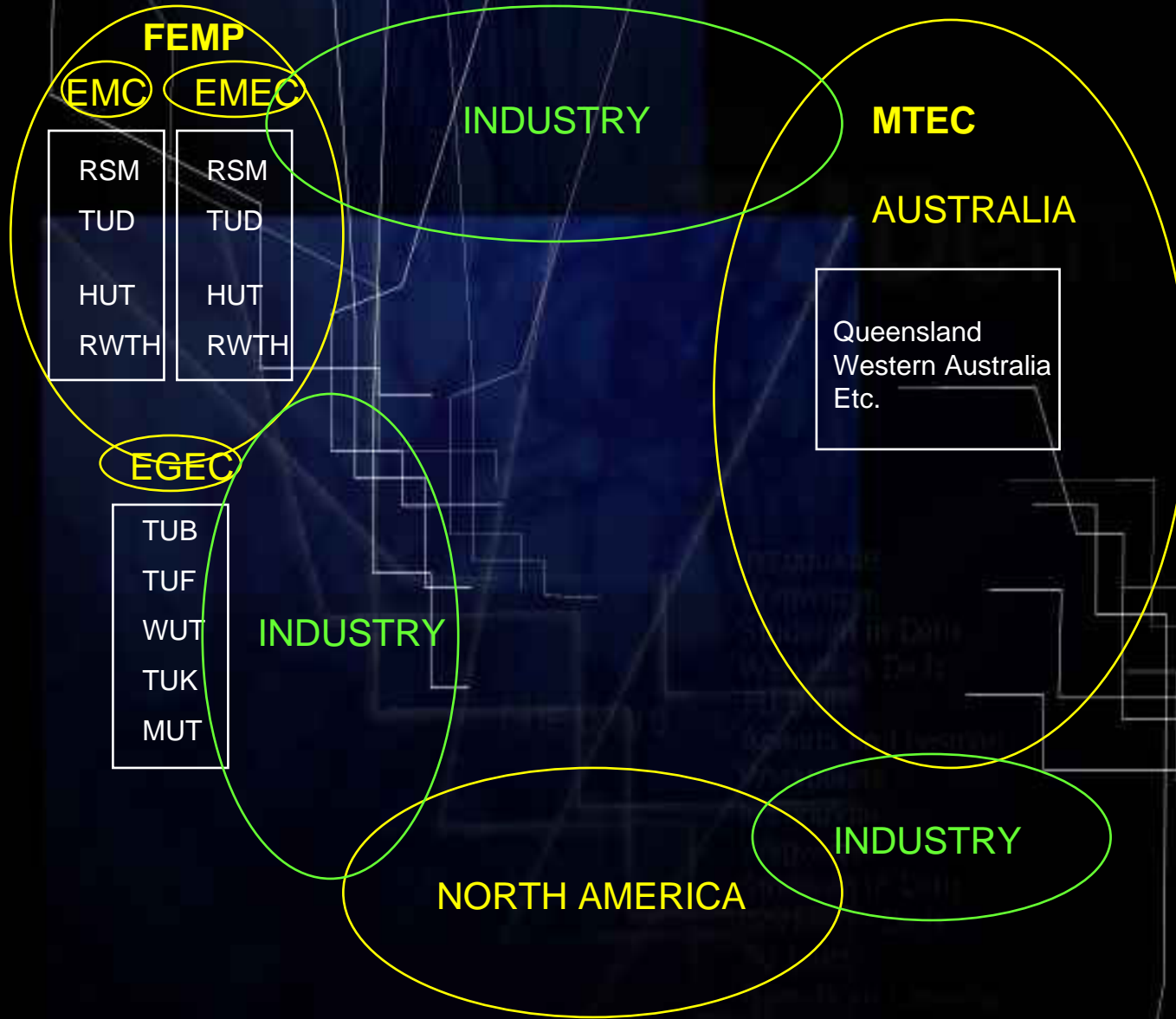
Queensland
Western Australia
Etc.

NORTH AMERICA

PROGRAMS 1999



PROGRAMS 2002



PROGRAMS 2003

FEMP

EMC

EMEC

CSM	???
TUD	TUD
HUT	HUT
RWTH	RWTH

EGEC

TUB
TUF
WUT
TUK
MUT

INDUSTRY

MTEC

AUSTRALIA

Queensland
Western Australia
Etc.

INDUSTRY

NORTH AMERICA

INDUSTRY

PROGRAMS 2005

FEMP

CSM	
TUD	HUT
RWTH	
TUB	TUF
WUT	TUK
	MUT

INDUSTRY

MTEC

AUSTRALIA

Queensland
Western Australia
Etc.

EMMEC

- EMC
- EMEC
- EGEN

INDUSTRY

NORTH AMERICA

INDUSTRY

PROGRAMS >2005

FEMP

CSM	
TUD	HUT
RWTH	
TUB	TUF
WUT	TUK
	MUT

INDUSTRY

MTEC

AUSTRALIA

Queensland
Western Australia
Etc.

EMMEC

- EMC
- EMEC
- EGEC

GLOBAL PROGRAMS

- University students
- Industry employees
- Internet based

INDUSTRY

NORTH AMERICA

INDUSTRY



STUDENT ENROLLMENT

	EMC	EMEC	EGEC	Total
W. Europe	114	66	11	191
E. Europe	10	6	19	35
North America	23			23
South America	3	16		19
Australia	2			2
	152	88	30	270

EMPLOYMENT

ABN AMRO Bank

Aix-o-therm

Anglo American - Anglo Coal

Anglo American plc.

Arctic Platinum Partnership

avocet mining

Ballast Ham Dredging (BHD)

Bezirksregierung Arnsberg

BHP Billiton - Cannington

Booz Allen & Hamilton

CNRL

Compañía Minera Doña Inés de Collahuasi

Corus B.V.

Crystallex International Corporation

DBE Peine

Decoma Decotech GmbH

Department of Housing, Spatial Planning

Deutsche Steinkohle

Eickhoff Maschinenfabrik

ELG

Elkem Materials

European Space Agency

ExxonMobil Chemical Holland

Falconbridge Sudbury

Falconbridge, Raglan project

GE
COMP 2005 -11

Gridpoint Finland Oy

GTS

Hanson Holdings plc

Health and Safety

HeidelbergCement AG

Herhof Umwelttechnik GmbH

Homonitirianske Bane Priedviza, a. s.

IDD

IHC Holland NV

Internet Vision

K+S Aktiengesellschaft

Kennecott Energy - Jacobs Ranch Mine

KGHM Polska Miedz S.A.

Kvaerner Process (Netherlands)

Lhoist Coordination Centre S.A.

Lisheen Mine

LKAB

Metso Minerals

Minera Alumbrera

MRARCO - Mining Innovation

Moduslink

Mosaic

MTI Holland B.V.

N.V. Billiton Maatschappij Suriname

Nobel drilling

Nokia

Outokumpu Oyj

Patent Attorneys Niedmers Jaeger Köster

Placer Dome-Campbell Mine

Projekt Management J&M GmbH

RAG

Resource Capital Funds

Rio Tinto (Hammersley Iron)

Rio Tinto plc

Riotinto (Robe River)

Rockplan Ltd

Roland Berger Strategy Consultants

RWE Power AG

Sandvik Tamrock

SecGo VE Oy

SEGEMAR

Shell International

SMS-Demag

SQM

State Supervision of Mines

Tamrock

Targus Management Consulting AG

tesa Werk Hamburg GmbH

Vattenfall Europe Mining AG

W. C. Heraeus GmbH & Co. KG

Weatherford



ERASMUS MUNDUS

- 250 Master courses with EU seal
- Scholarships (21,000 Euro/year) for non EU students

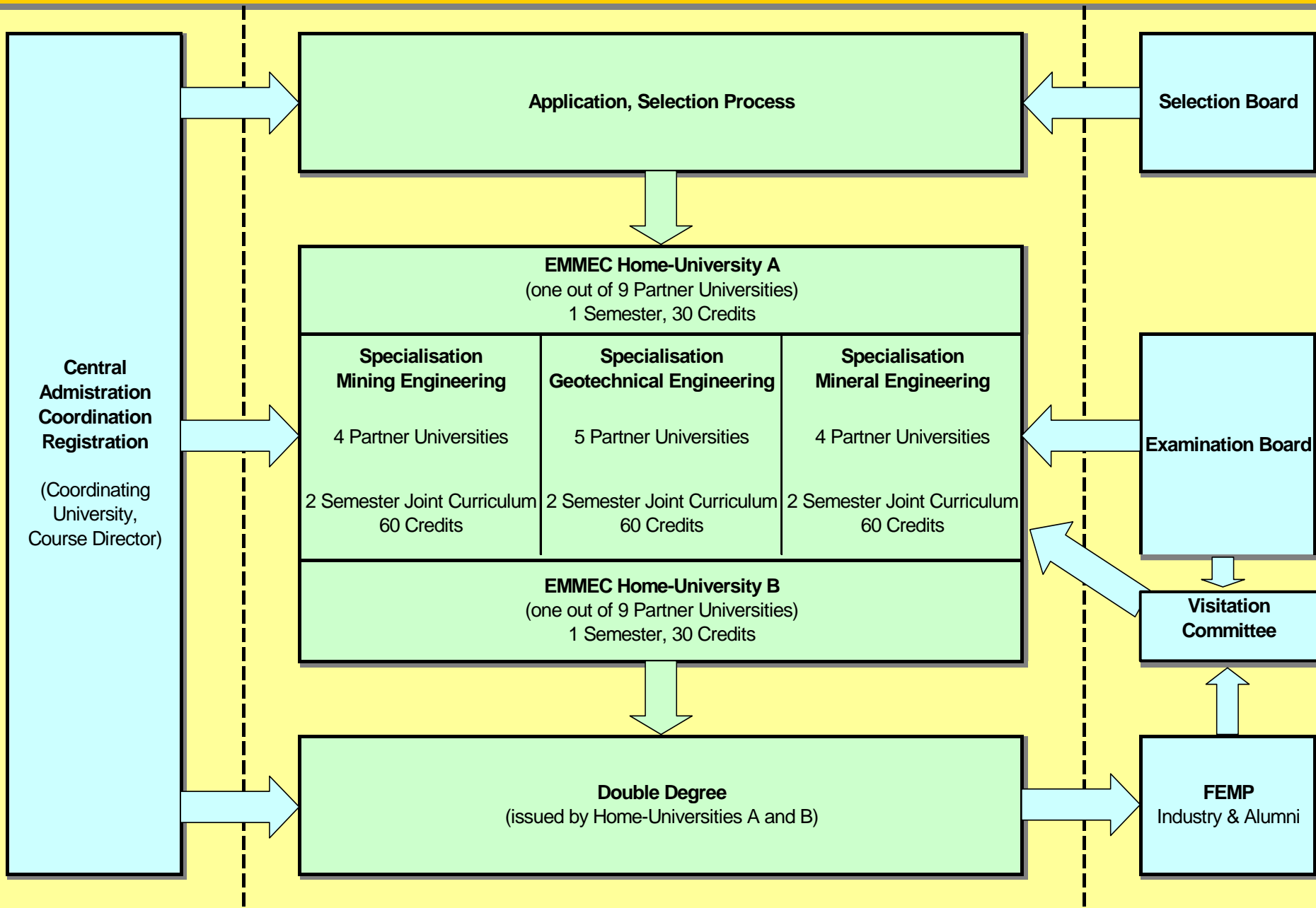


- So far 33 approved
- Oct 2004 Three programs within EMMEC
- EMMEC in top 25%, but structure was confusing
- Re-issue in May 2005, as EMMEC (one program, 3 specialisations)

FINANCIAL ASPECTS

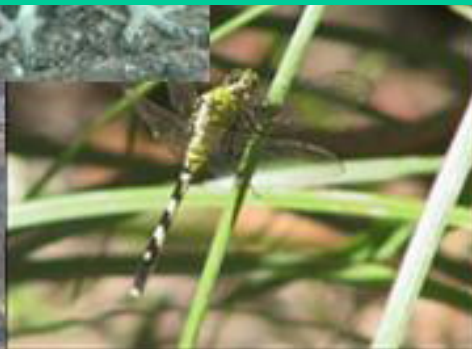
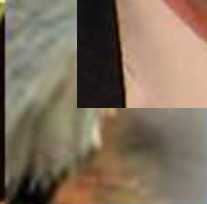
- Students receive 2 yrs @ 21,000 Euro
- Students
 - Pay fee to EMEC 13,000 Euro
 - Keep for living 8,000 Euro
- EMMEC
 - Pays legal fee to universities ~ 8,000 Euro
 - Available to run programs ~ 5,000 Euro

EMMEC
European Masters Mineral Engineering Course
4 Semester, 120 Credits



CONCLUSIONS

- If nothing is done, EXTINCTION
- Things don't happen automatically
- Initiative has to come from universities
- Co-operation of universities is essential !!
- Many benefits for students
- Industry is willing but wants to see initiatives first
- **IF WE DON'T DO THIS THEN.....**



21st CENTURY ENDANGERED SPECIES