



Society of Mining Professors **Societät der Bergbaukunde** **(SOMP)**

International survey of Mining
Engineering student and graduate
numbers (March 2008)



Survey Status

- The current survey outcomes must be regarded as a “work in progress”
- There are many gaps in the data – both within institutions and across countries
- It is hoped that these will progressively be filled and the survey carried out annually in the future, to establish a comprehensive database of mining engineering programs internationally



Survey addressed the following:

- Country, Institution, Program, No. of Years
- Academic teaching staff numbers for Mining Program (and % female staff)
- Student commencing numbers (2000-2007) (incl. % female)
- Student graduating numbers (2000-2007) (incl. % female)
- Sought agreement for data release, on a national basis

Responses Received

- Total number received
 - 21 universities, from 15 countries

Australia (3)	Austria (1)
Canada (1)	Finland (1)
France (1)	Germany (3)
Greece (1)	Hungary (1)
Japan (1)	Netherlands (1)
Poland (1)	Slovakia (1)
South Africa (2)	Spain (1)
USA (2)	

List of Respondents

- 
- Australia
 - Curtin (WASM)
 - UNSW
 - Wollongong
 - Austria
 - Leoben
 - Canada
 - UBC
 - Finland
 - Helsinki
 - France
 - Ecole de Mines
 - Germany
 - Aachen
 - Berlin
 - Clausthal

List of Respondents (cont'd)



- Greece

- Tech Uni of Crete

- Hungary

- Miskolc

- Japan

- Kyushu

- Netherlands

- Delft

- Poland

- AGH Uni of Science & Technology (Krakow)

- Slovakia

- Kosice

List of Respondents (cont'd)



■ South Africa

- Pretoria
- Witwatersrand

■ Spain

- UPM (Madrid)

■ USA

- Penn State
- Virginia Tech.

Previous International Survey Data

Mining Engineering Graduate Numbers (March 07)

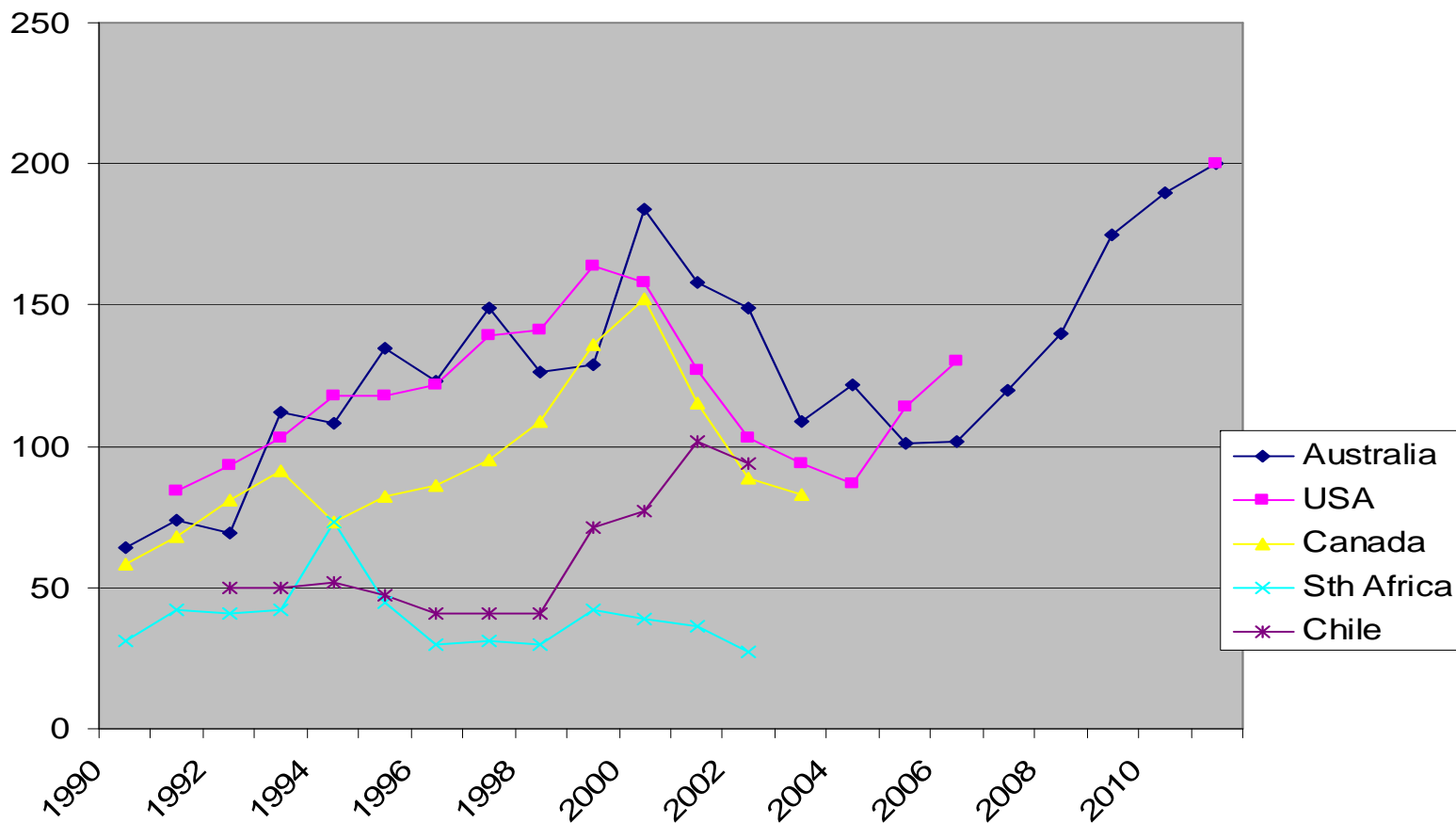
Sources: 1. P Knights (2003)

2. K Tuckwell (2005)

3. SME Conf 2007 (Taranik and Freeman)

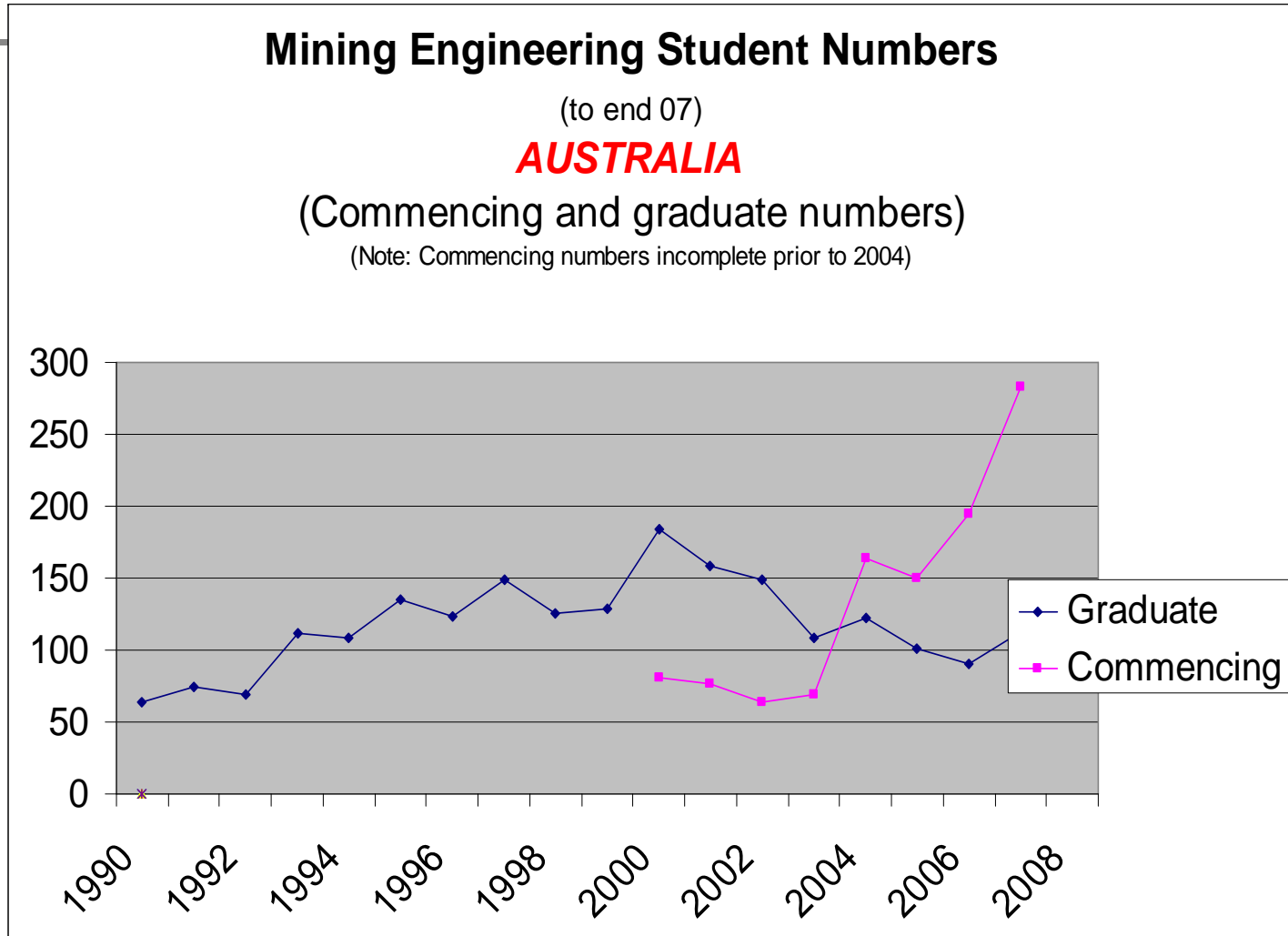
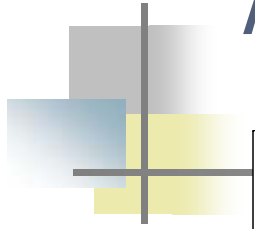
4. Hebblewhite/MEA (various)

(Note: Some data are estimates/approximate only)



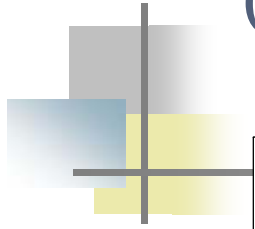
SOMP Data (March 08)

Australia



SOMP Data (March 08)

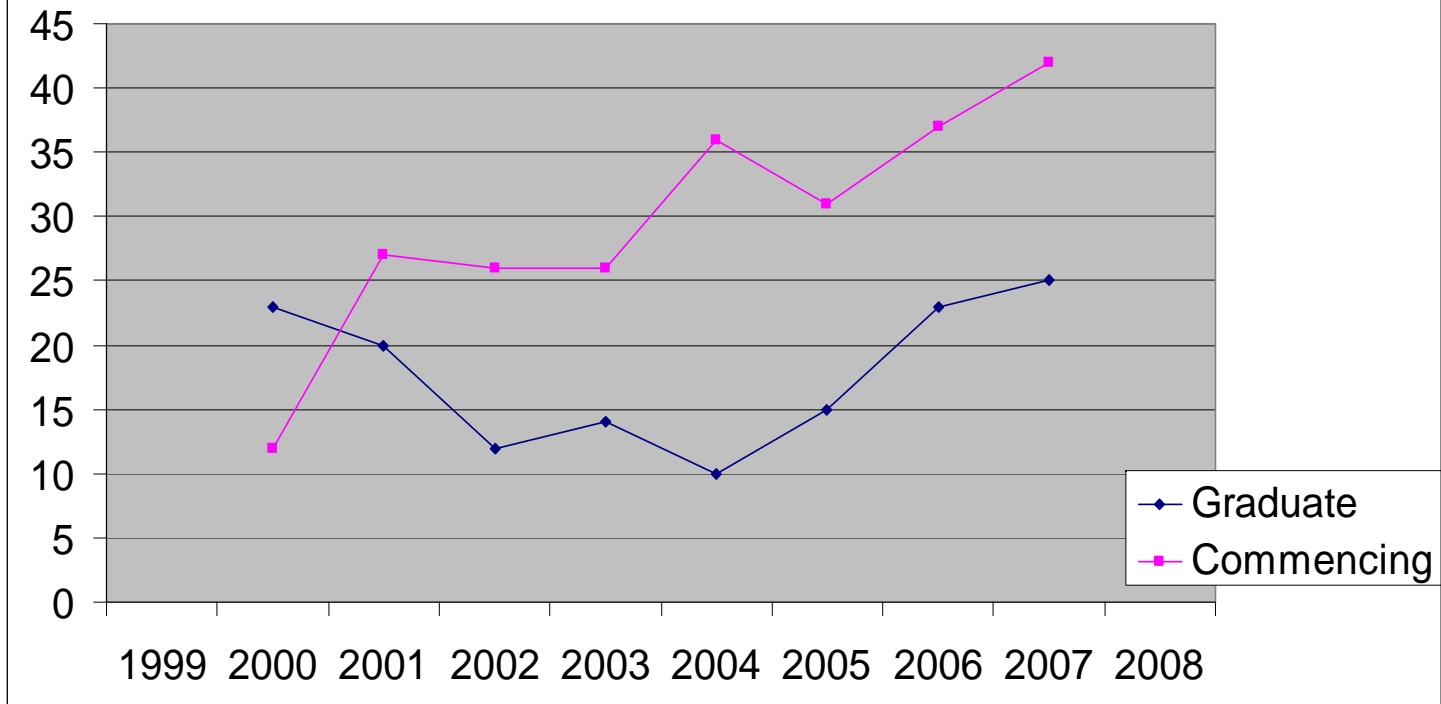
Canada



Mining Engineering Student Numbers (to end 07)

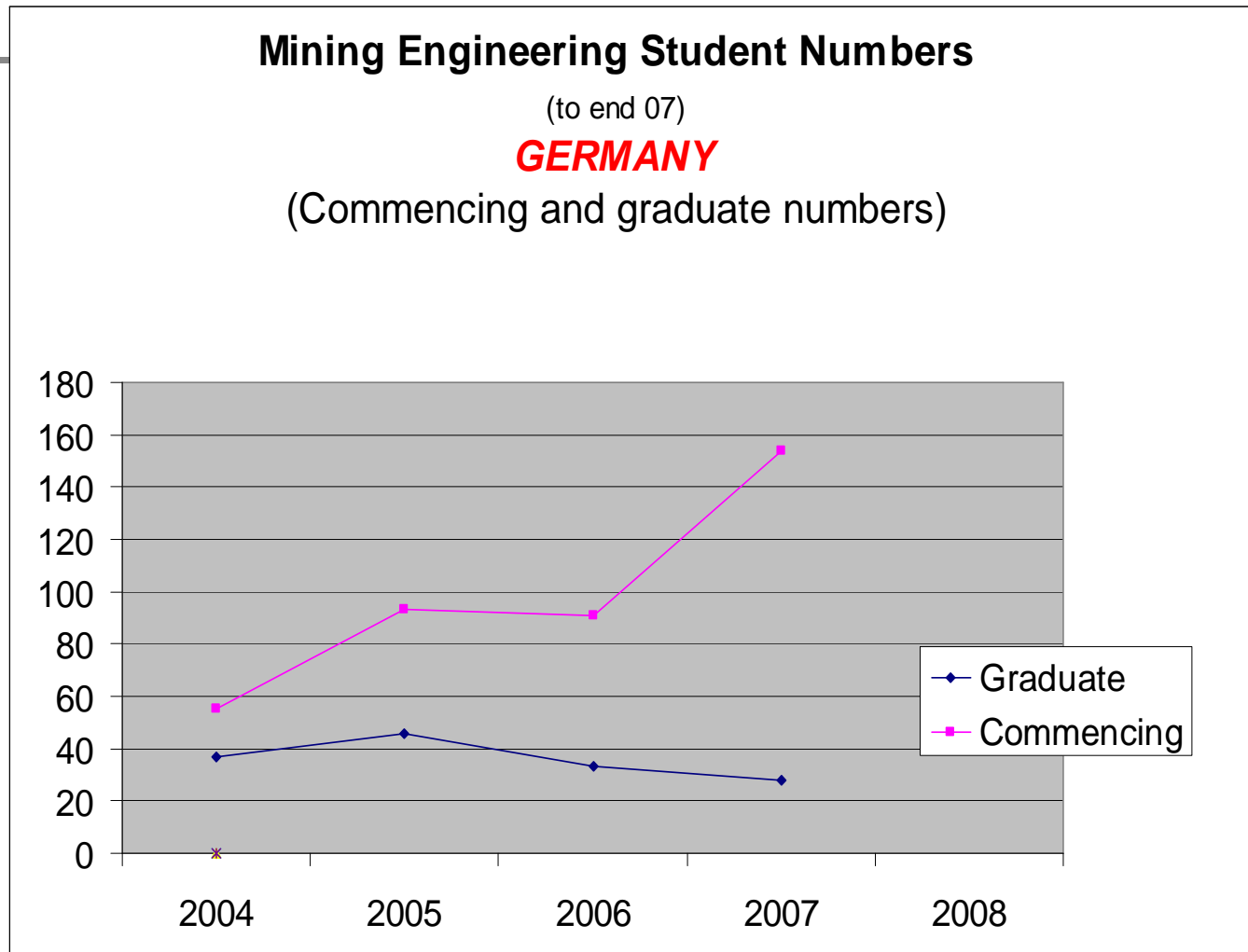
CANADA (incomplete data)

(Commencing and graduate numbers)



SOMP Data (March 08)

Germany



SOMP Data (March 08)

Europe (consolidated)

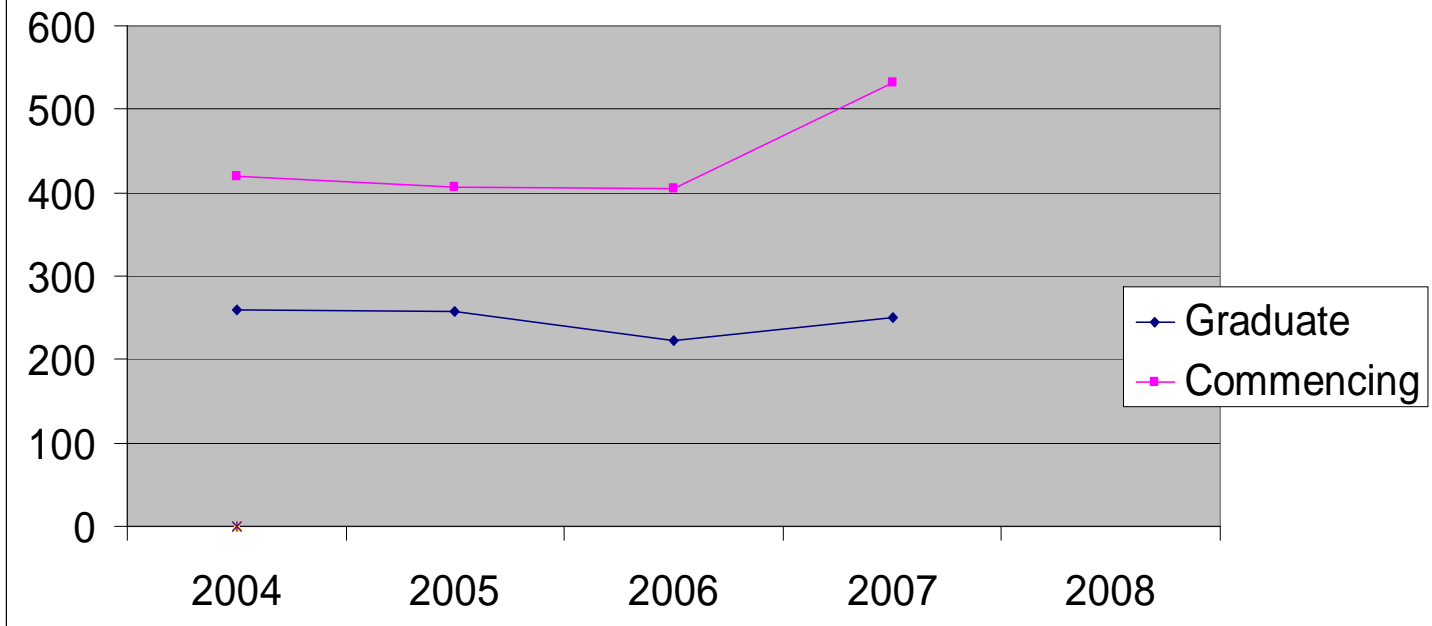
Mining Engineering Student Numbers

(to end 07)

EUROPE

(Commencing and graduate numbers)

(Note: Incomplete data, except for 2007)



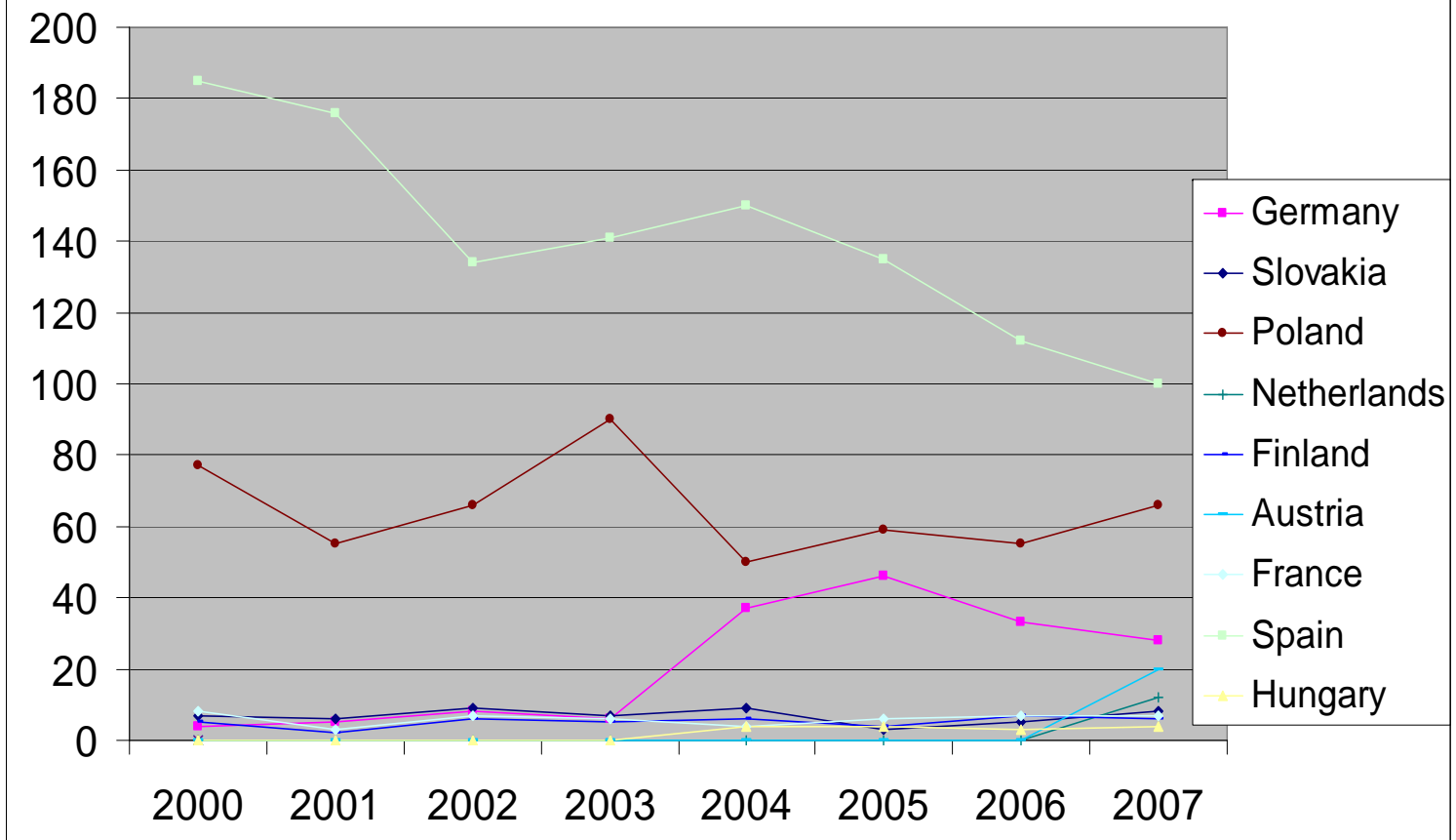
SOMP Data (March 08)

Europe (individual – graduate numbers only)

Mining Engineering Student Numbers (to end 07)

EUROPE (Graduate numbers)

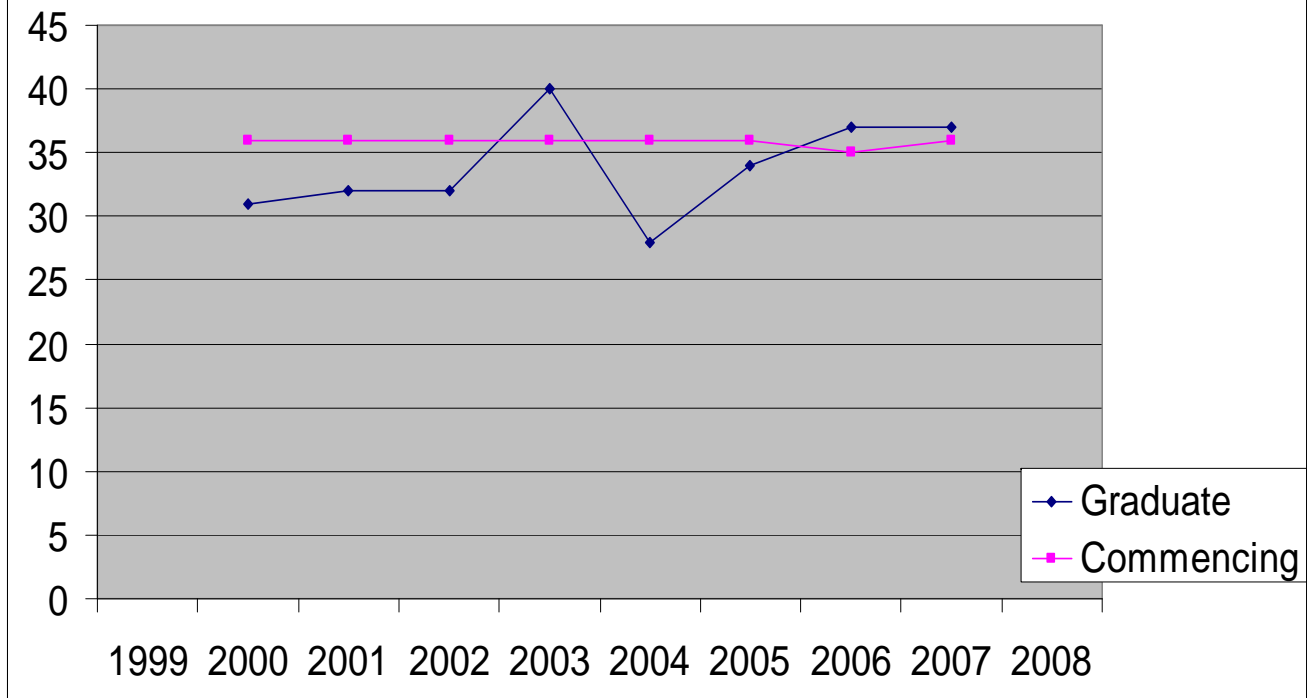
(Note: Incomplete data, except for 2007)



SOMP Data (March 08)

Japan

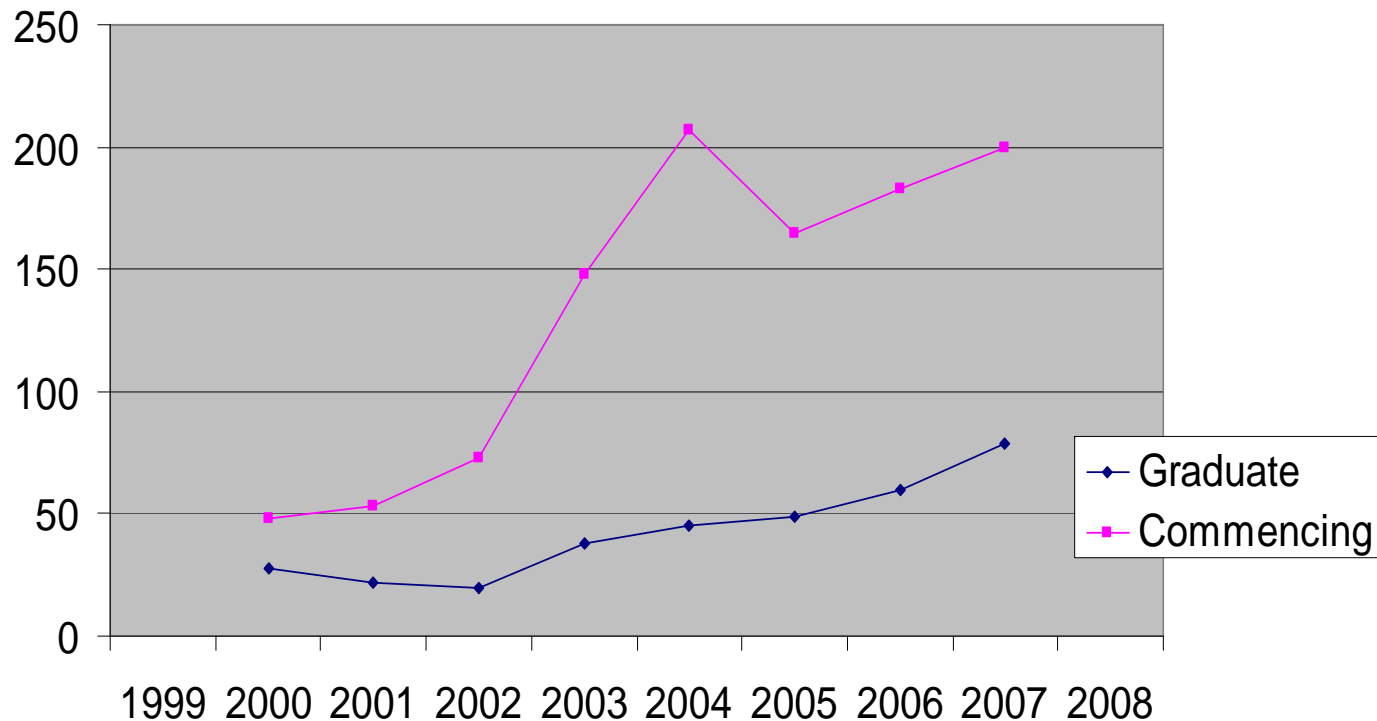
Mining Engineering Student Numbers (to end 07)
JAPAN
(Commencing and graduate numbers)



SOMP Data (March 08)

South Africa

Mining Engineering Student Numbers (to end 07)
SOUTH AFRICA
(Commencing and graduate numbers)



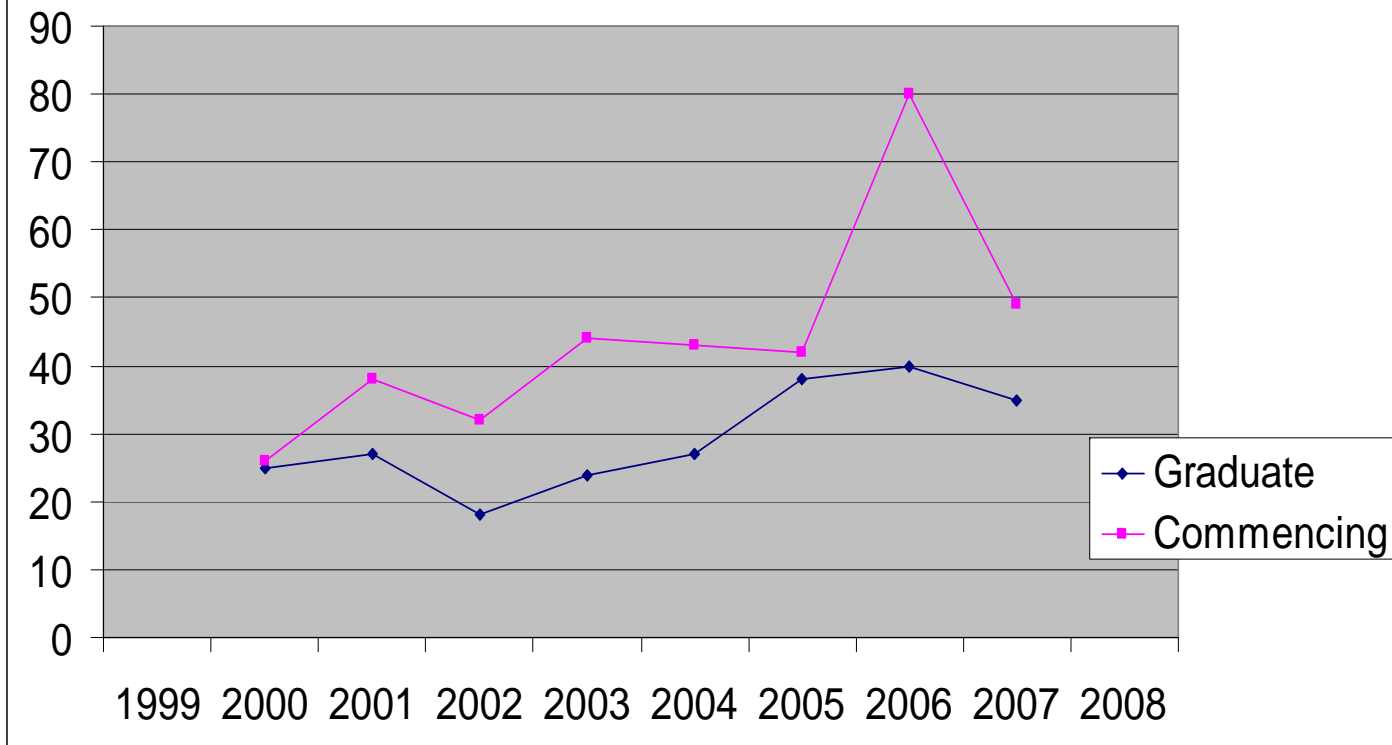
SOMP Data (March 08)

USA

Mining Engineering Student Numbers (to end 07)

USA (incomplete data)

(Commencing and graduate numbers)



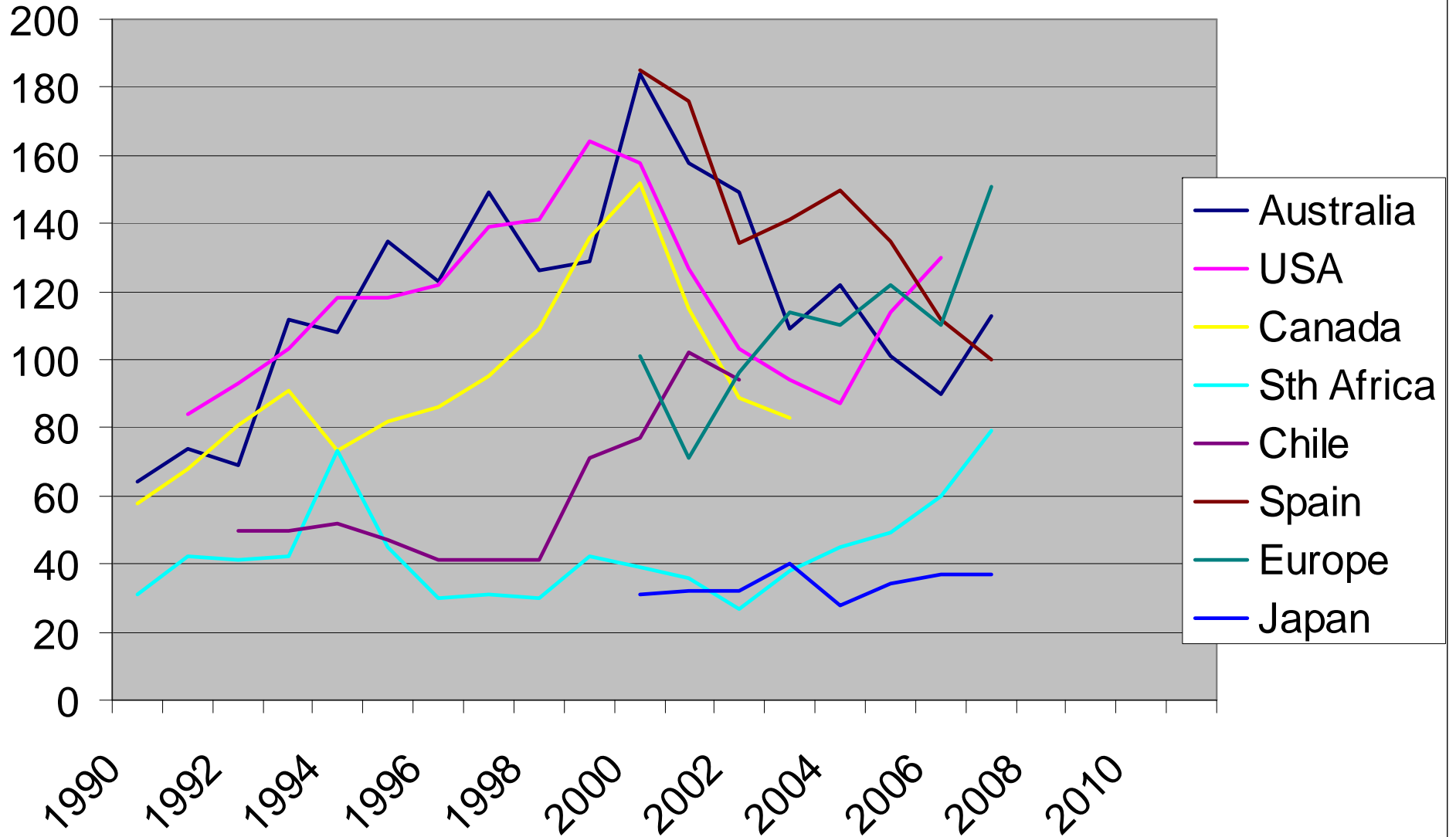


Updated International Graduate Data (incl. SOMP Data (March 08))

Mining Engineering Graduate Numbers (to end 07)

Sources: 1. P Knights (2003); 2. K Tuckwell (2005); 3. SME Conf 2007 (Taranik and Freeman); 4. Hebblewhite/MEA (various);
5.SOMP Survey (08)

(Some data approx. only. Europe excl Spain)



2007 Student Number Summary

- In summary, in 2007 the total student numbers reported were:

<u>Country</u>	<u>Commencing</u>	<u>Graduating</u>
Australia	285	113
Canada	42	25
Europe	532	251
Japan	36	37
South Africa	200	79
USA	49	35
TOTAL	1,144	540



Student Gender Data

(% of total 2007 graduates who were female)

■ Australia	13%
■ Canada	12%
■ Europe	21%
■ Japan	5%
■ South Africa	7%
■ USA	17%

Staff Data

(caution in use of this data, due to different interpretations across countries)

■ Australia	32 staff (0% female)
■ Canada	13 staff (10% female)
■ Europe	519 staff (13% female)
■ Japan	23 staff (9% female)
■ South Africa	23 staff (24% female)
■ USA	12 staff (0% female)

Student:Staff Ratios

(caution in use of this data, due to different interpretations across countries)

■ Australia	14.3
■ Canada	7.7
■ Europe	1.0
■ Japan	6.4
■ South Africa	13.7
■ USA	11.7



Thank You

- Thanks to all who have responded so far
- We welcome further responses, and intend to update and report annually, with the co-operation of all participants

Bruce Hebblewhite

(on behalf of SOMP Education Committee)