



Society of Mining Professors **Societät der Bergbaukunde** **(SOMP)**

International survey of Mining
Engineering student and graduate
numbers (April 2009)



Survey addressed the following:

- Country, Institution, Program, No. of Years
- Academic teaching staff numbers for Mining Program (and % female staff)
- Student commencing numbers (2000-2008) (incl. % female)
- Student graduating numbers (2000-2008) (incl. % female)
- Sought agreement for data release, on a national basis

Responses Received

- Total number received
 - 35 universities, from 17 countries (21 responses in 2008)

Australia (5)	Austria (0)
Canada (0)	Finland (1)
France (0)	Germany (1)
Greece (1)	Hungary (0)
Japan (2)	Netherlands (1)
Poland (1)	Slovakia (1)
South Africa (2)	Spain (0)
USA (13)	Peru (1)
Malaysia (1)	Namibia (1)
Serbia (1)	Croatia (1)
Italy (1)	Czech Republic (1)

Previous International Survey Data

Mining Engineering Graduate Numbers (March 07)

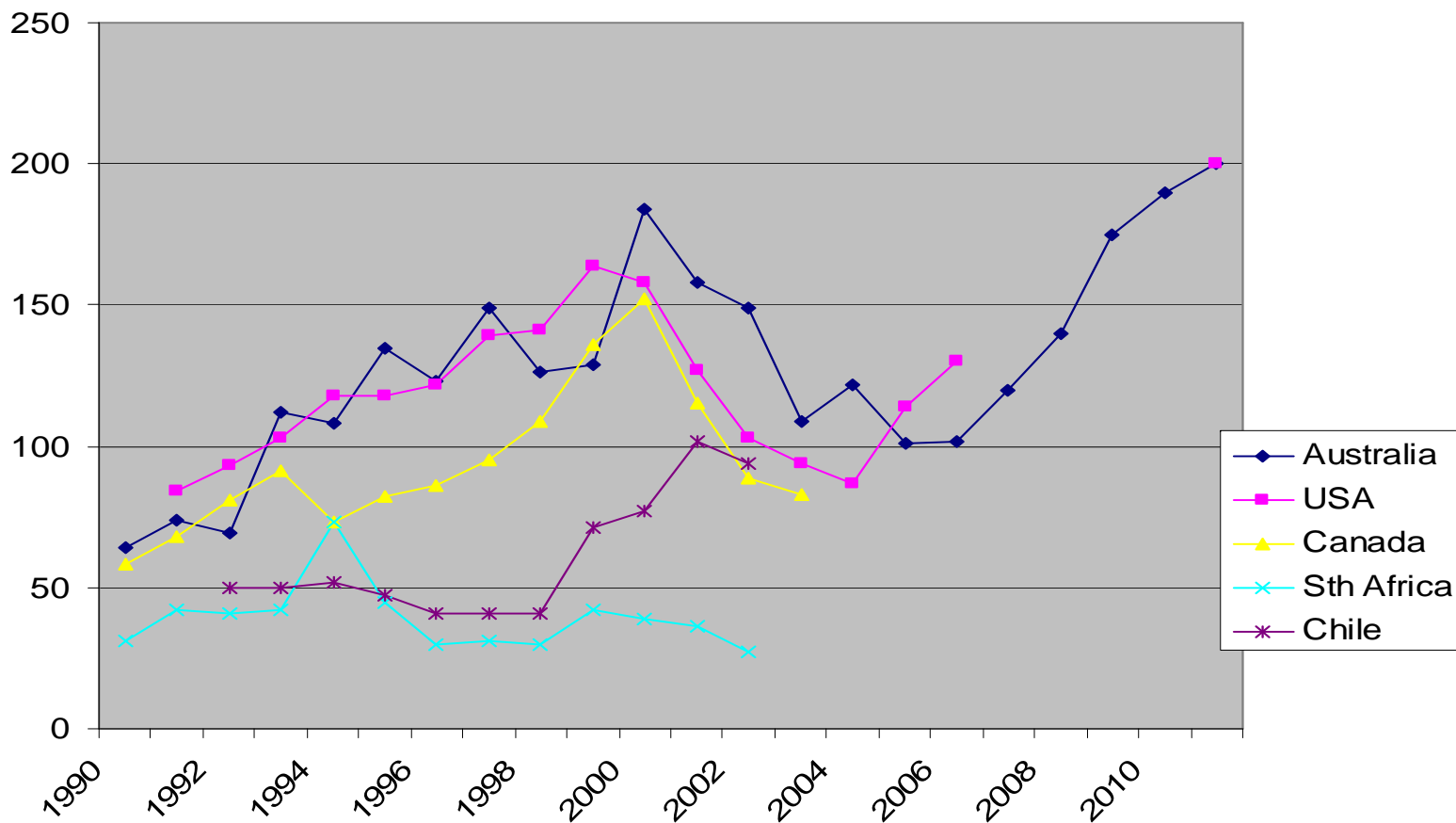
Sources: 1. P Knights (2003)

2. K Tuckwell (2005)

3. SME Conf 2007 (Taranik and Freeman)

4. Hebblewhite/MEA (various)

(Note: Some data are estimates/approximate only)





2009 Survey (2008 Data)

Consolidated national data
(graduate numbers)

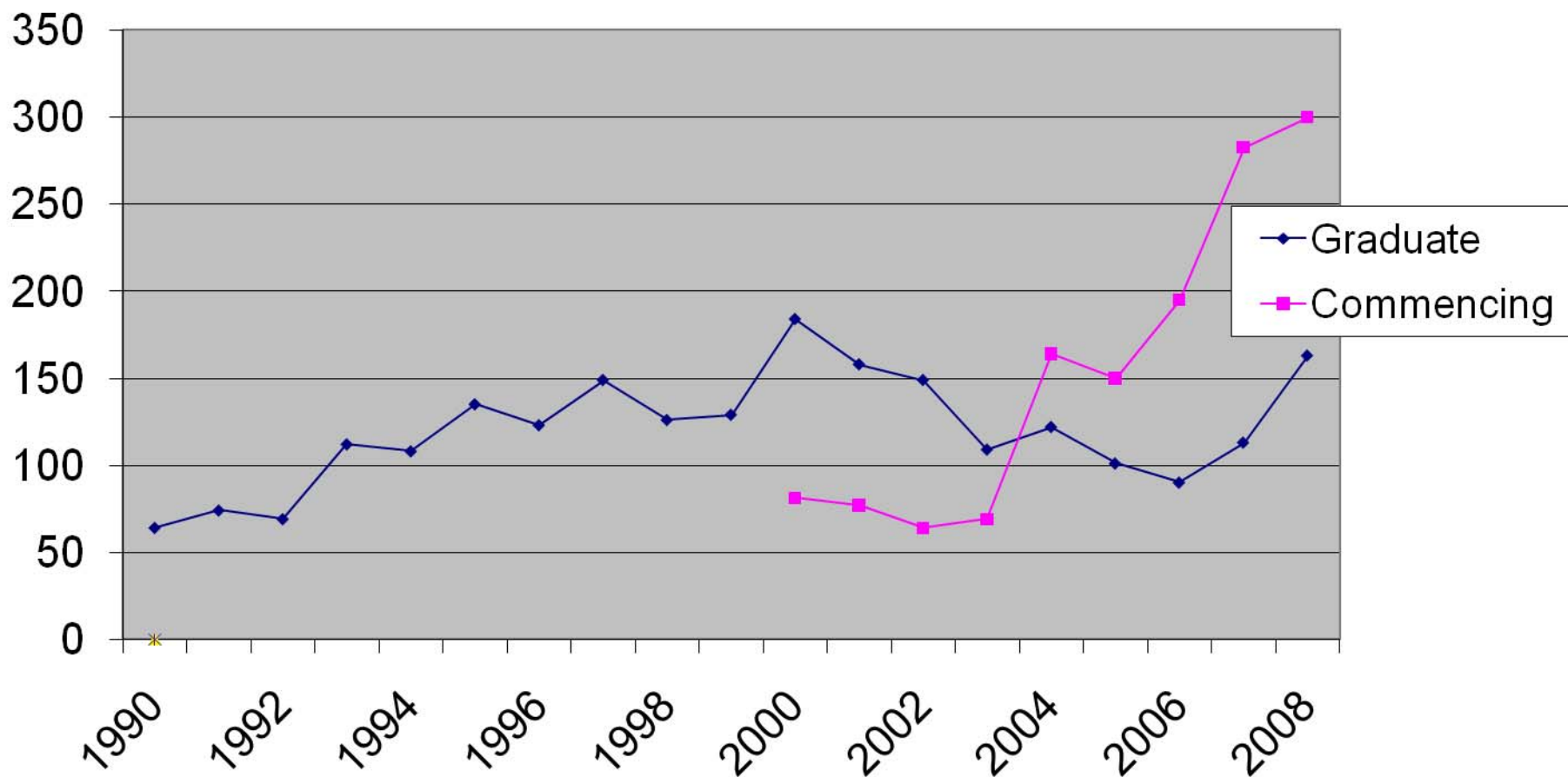
Mining Engineering Student Numbers

(to end 08)

AUSTRALIA

(Commencing and graduate numbers)

(Note: Commencing numbers incomplete prior to 2004)



Mining Engineering Student Numbers (to end 08)

USA

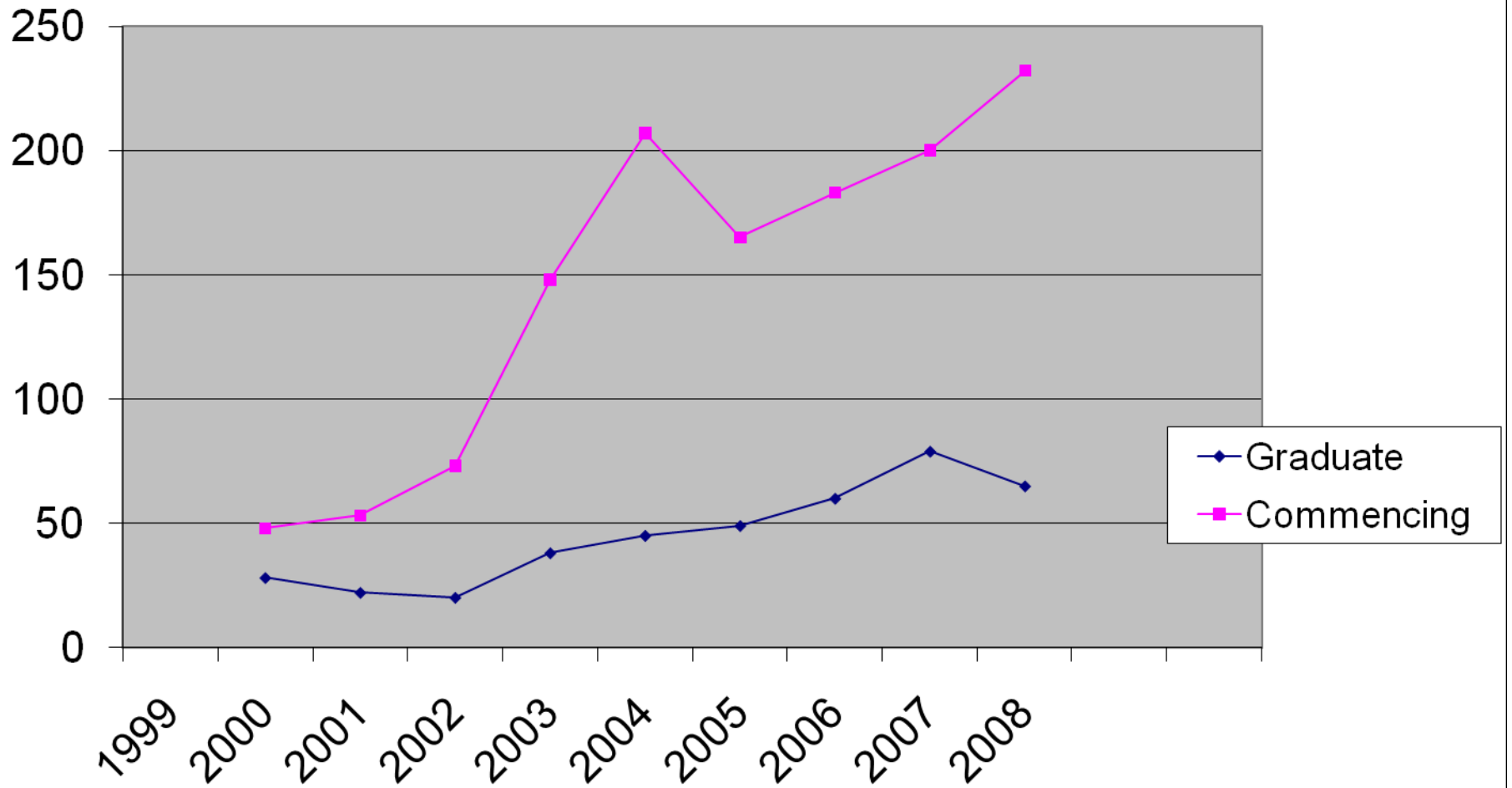
(Commencing and graduate numbers)



Mining Engineering Student Numbers (to end 08)

SOUTH AFRICA

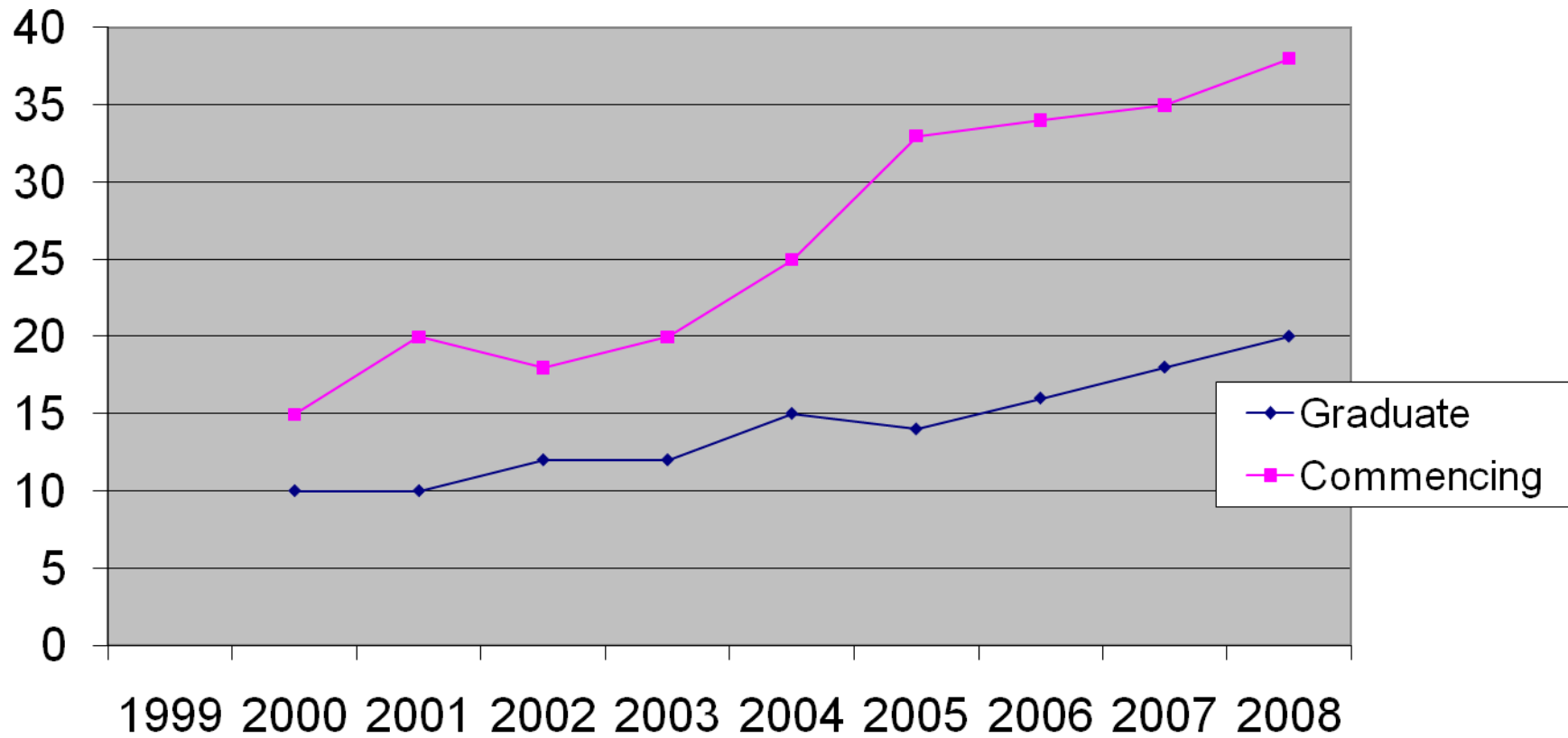
(Commencing and graduate numbers)



Mining Engineering Student Numbers (to end 08)

PERU

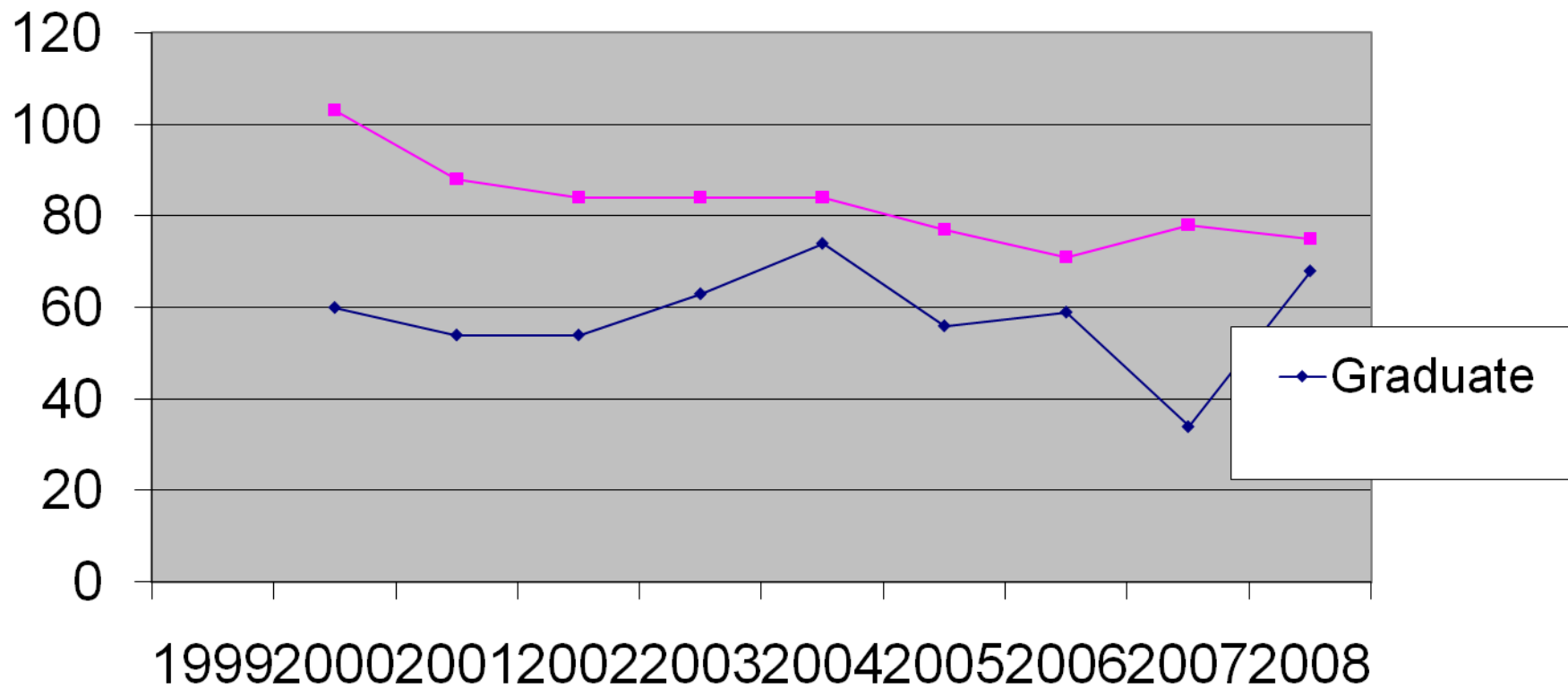
(Commencing and graduate numbers)



Mining Engineering Student Numbers (to end 08)

GREECE

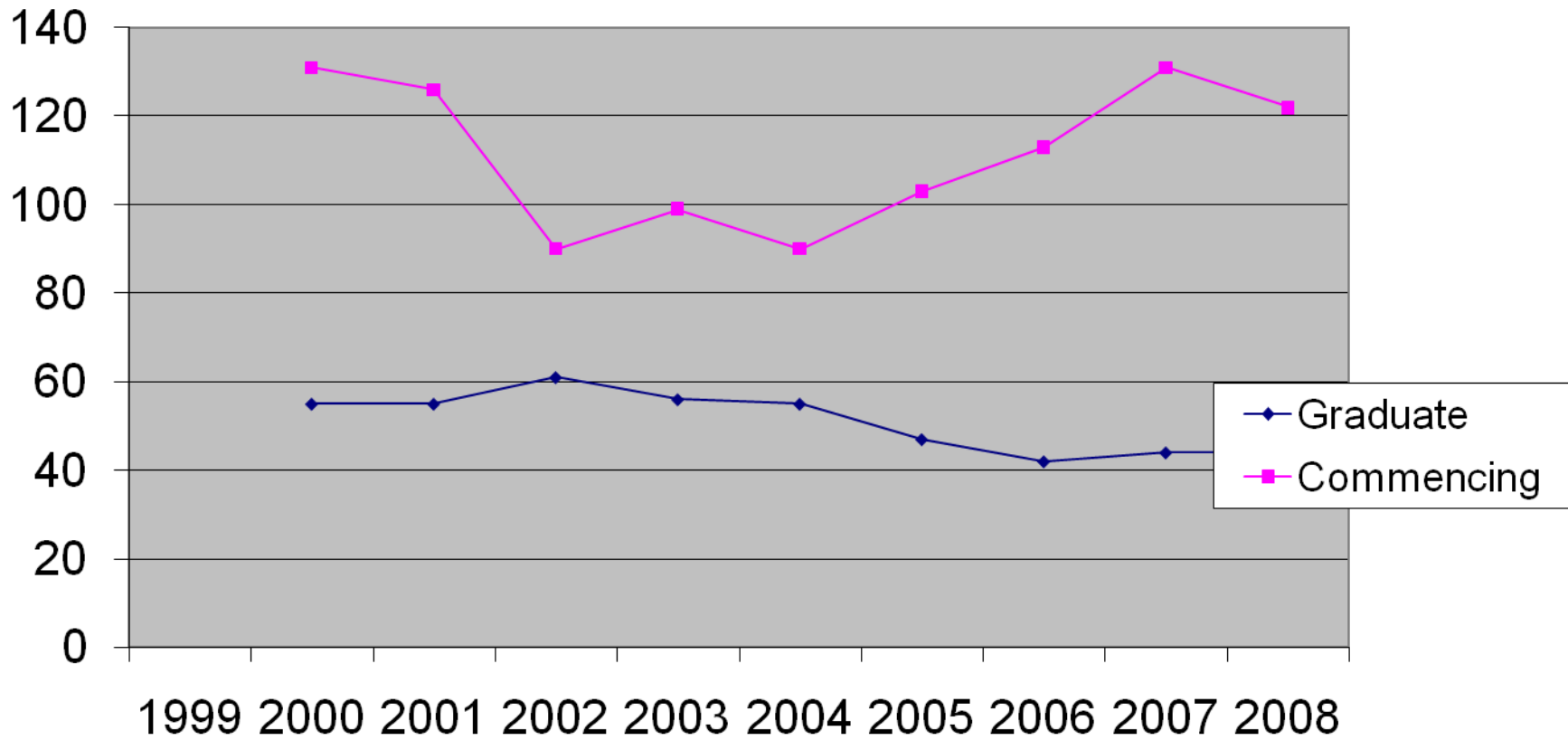
(Commencing and graduate numbers)



Mining Engineering Student Numbers (to end 08)

SERBIA

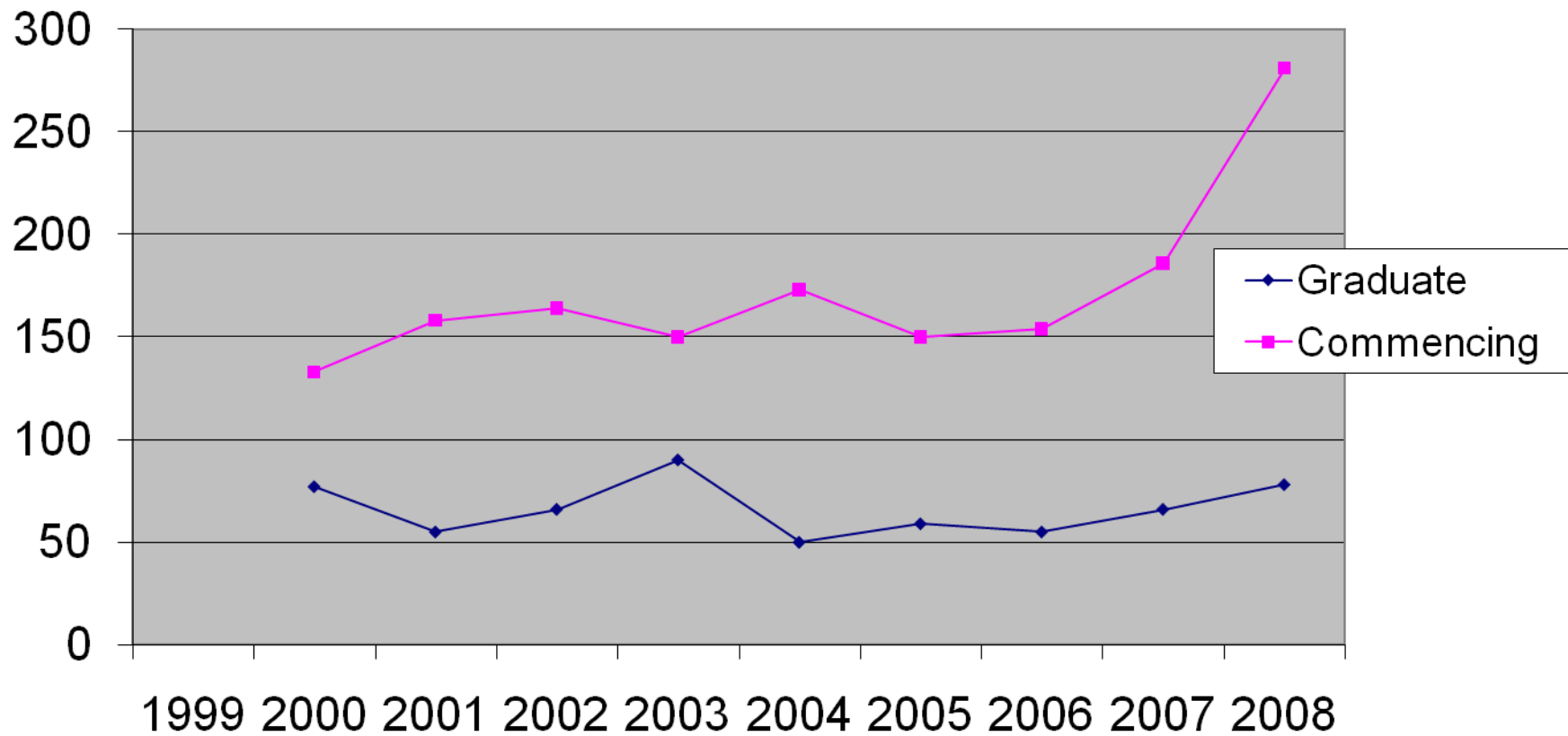
(Commencing and graduate numbers)

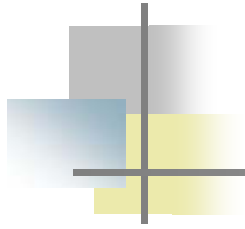


Mining Engineering Student Numbers (to end 08)

POLAND

(Commencing and graduate numbers)

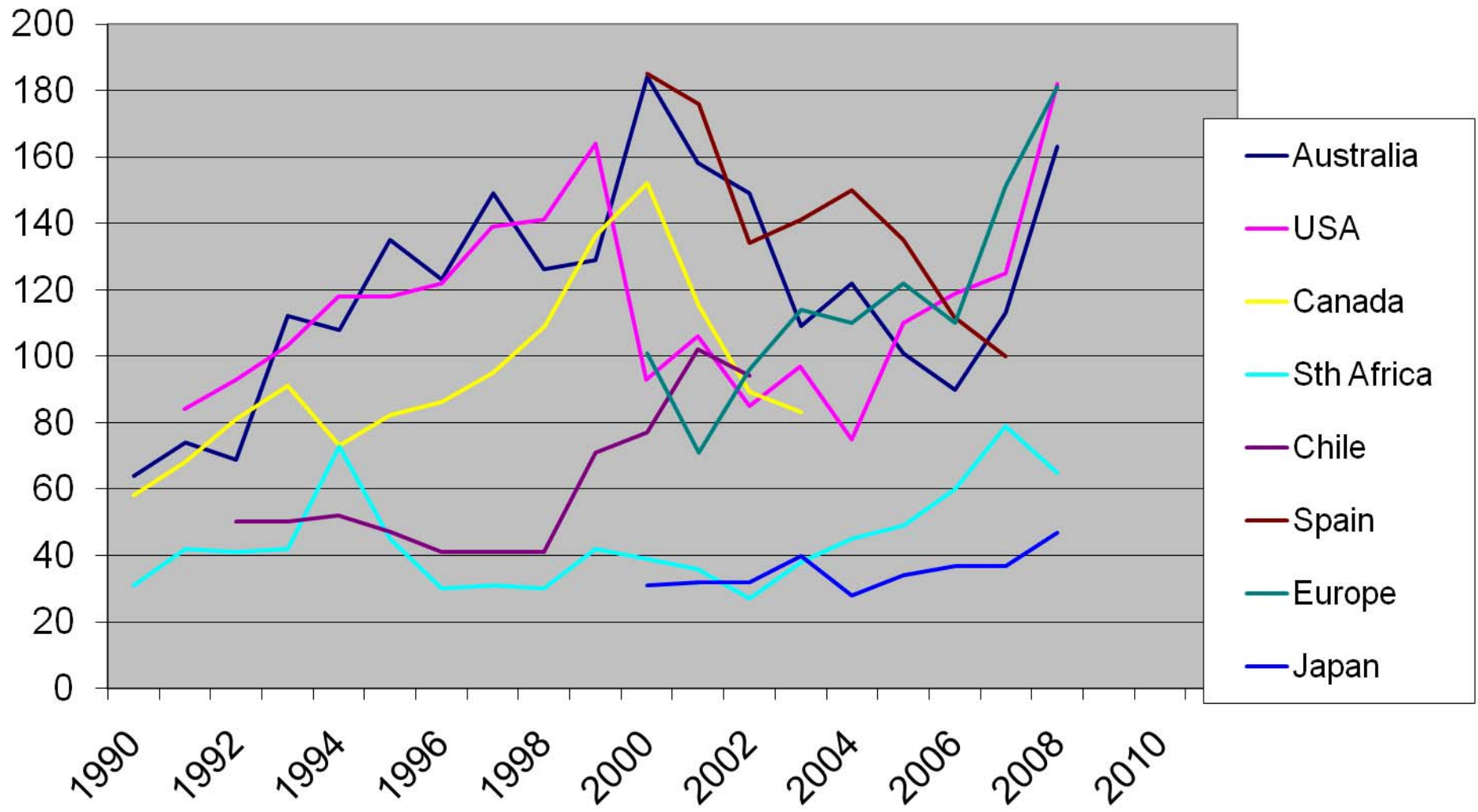




Updated International Graduate Data (incl. SOMP Data (April 09))

Mining Engineering Graduate Numbers (to end 08)

Sources: 1. P Knights (2003); 2. K Tuckwell (2005); 3. 2009 SME Guide to US Minerals Schools; 4. Hebblewhite/MEA (various); 5. SOMP Survey (09)
(Europe excl Spain)





Thank You

- Thanks to all who have responded so far
- We welcome further responses, and intend to update and report annually, with the co-operation of all participants

Bruce Hebblewhite

(on behalf of SOMP Education Committee)