



Society of Mining Professors **Societät der Bergbaukunde** **(SOMP)**

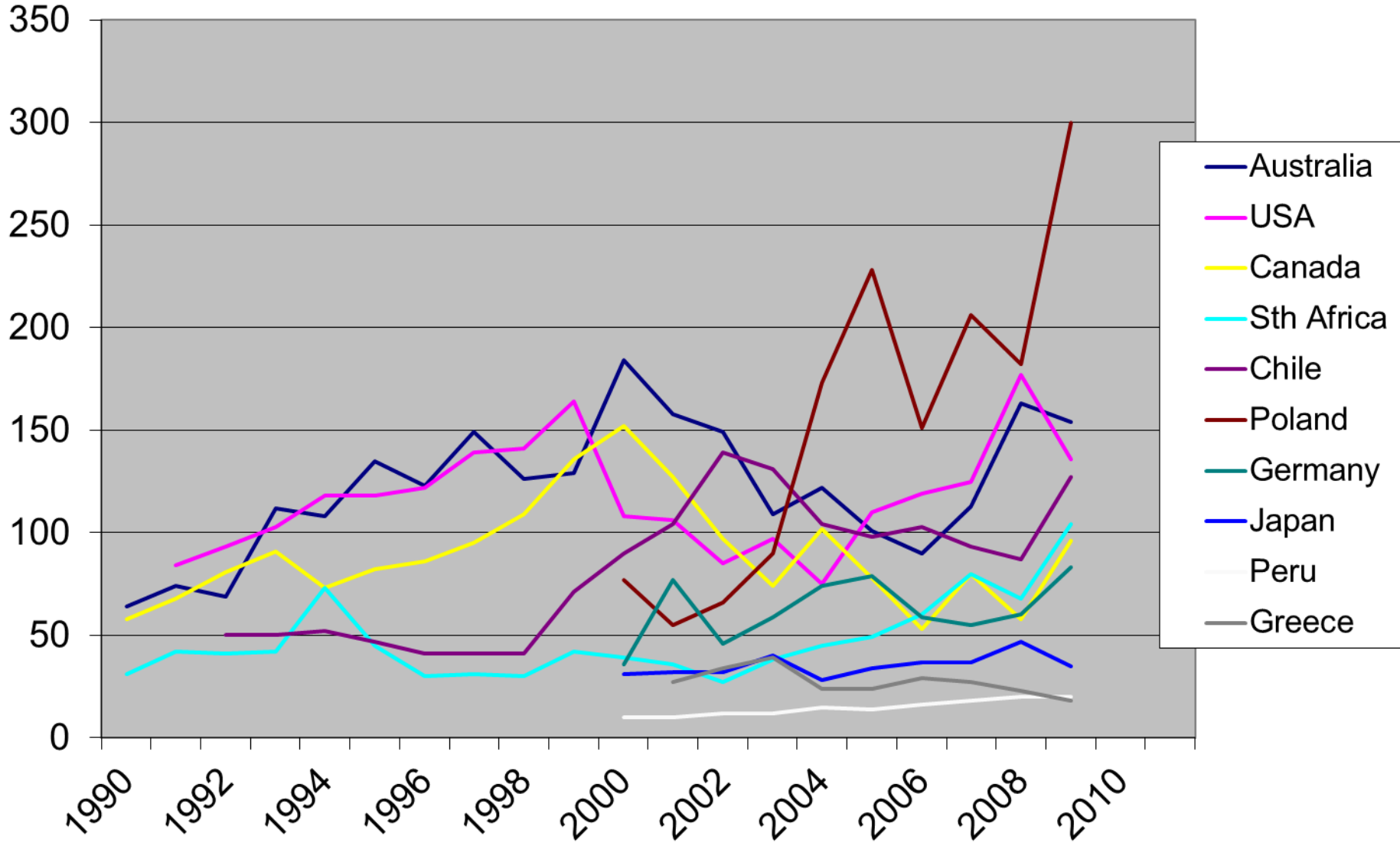
International survey of Mining
Engineering student and graduate
numbers (August 2011)

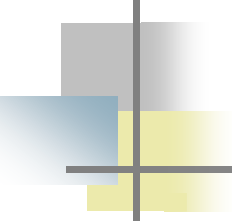


Previous data from 2009
(reported in 2010)

Mining Engineering Graduate Numbers (to end 2009)

Note: Canada incomplete beyond 2005; US incomplete in 2009





2011 Survey addressed the following:

Country, Institution, Program, No. of Years

- Academic teaching staff numbers for Mining Program (and % female staff)
- Staff age distribution
- Student commencing numbers (2000-2010) (incl. % female)
- Student graduating numbers (2000-2010) (incl. % female)
- Agreement for data release, on an aggregated national basis

Survey Accuracy & Interpretation



- Data is reported in this analysis, on the basis of the information provided by individual universities. No attempt has been made to independently validate the data, which has been accepted as accurate, as given.
- Unless all universities from a country have responded, caution should be exercised in any interpretation of absolute student numbers, which will clearly be incomplete for the country. Trend data should be reasonably meaningful in most cases.

Responses Received

- Total number received
 - 30 universities, from 12 countries
 - (38 universities from 14 countries in 2010)
 - (35 from 17 countries in 2009)

Australia (5)	Austria (1)
Canada (1)	South Africa (2)
USA (13) (SME survey data)	Turkey (1)
Japan (1)	Czech Republic (1)
Namibia (1)	Chile (1)
Poland (2)	Romania(1)



2011 Survey (2010 Data)

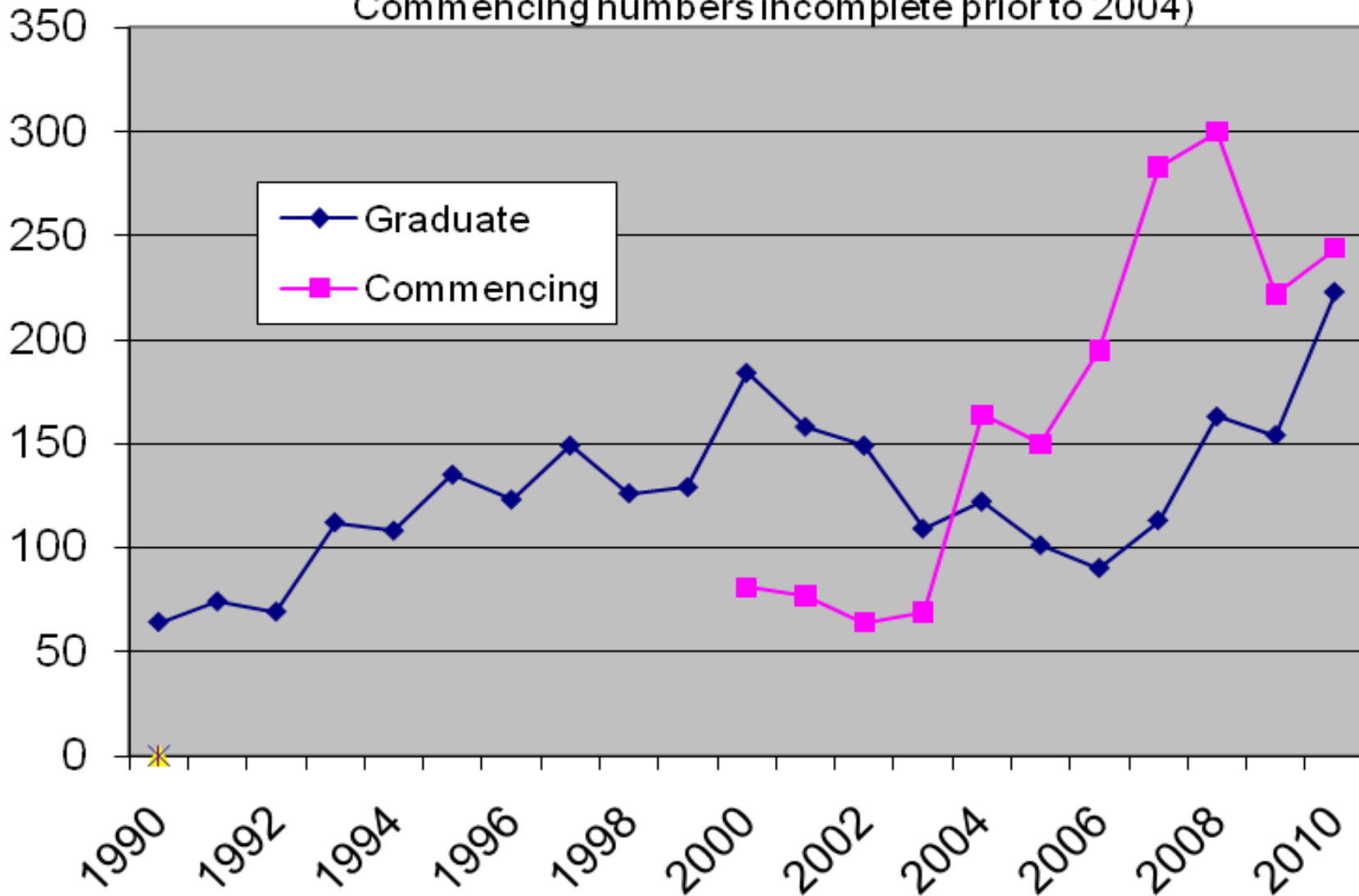
Consolidated national data
(graduate numbers)

Mining Engineering Student Numbers

AUSTRALIA

(Commencing and graduate numbers)

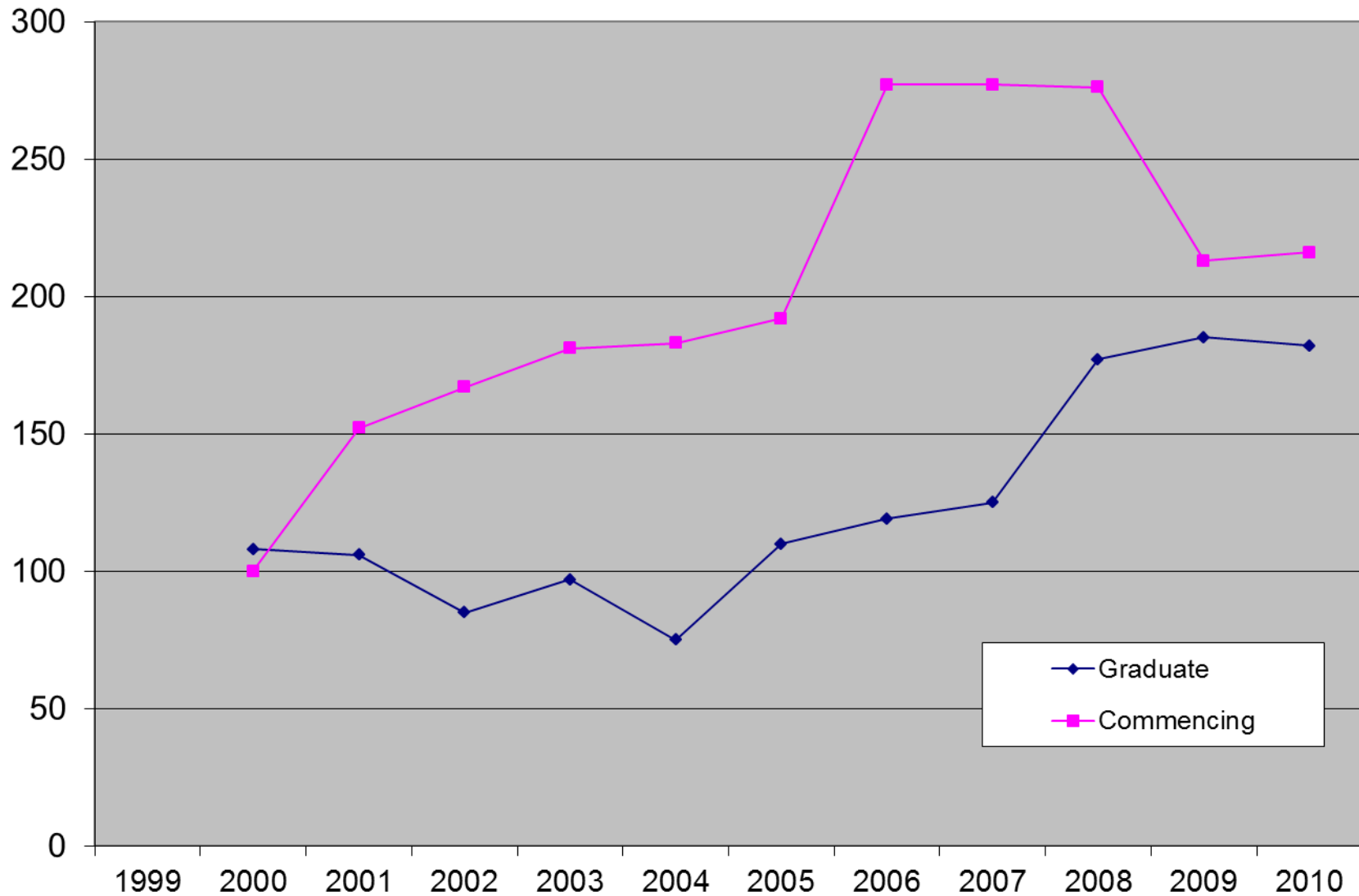
(Notes: Graduate numbers are national totals;
Commencing numbers incomplete prior to 2004)



Mining Engineering Student Numbers (to end 2010)

USA

(Commencing and graduate numbers)



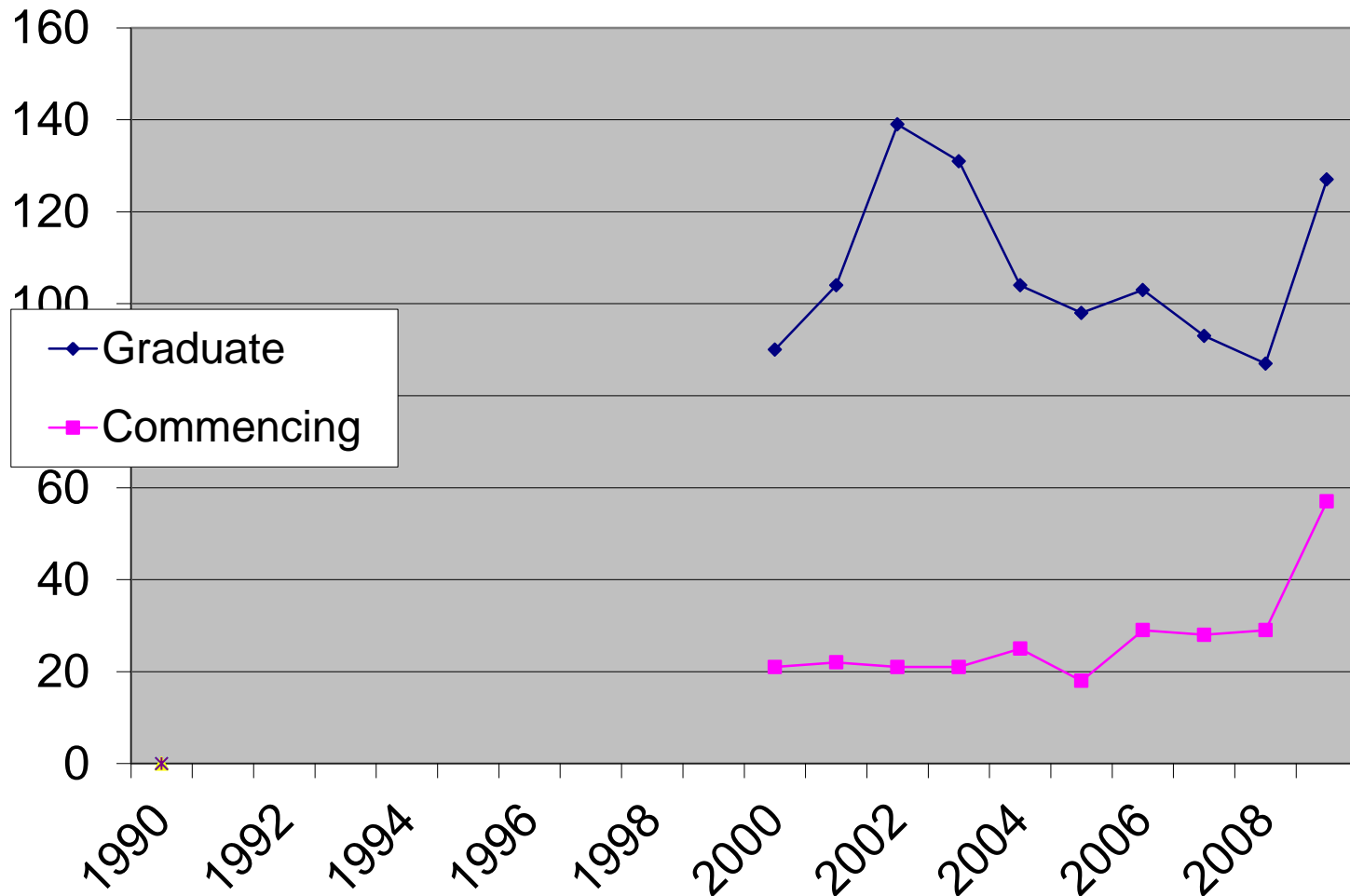
Mining Engineering Student Numbers

(to end 09)

CHILE

(Commencing and graduate numbers)

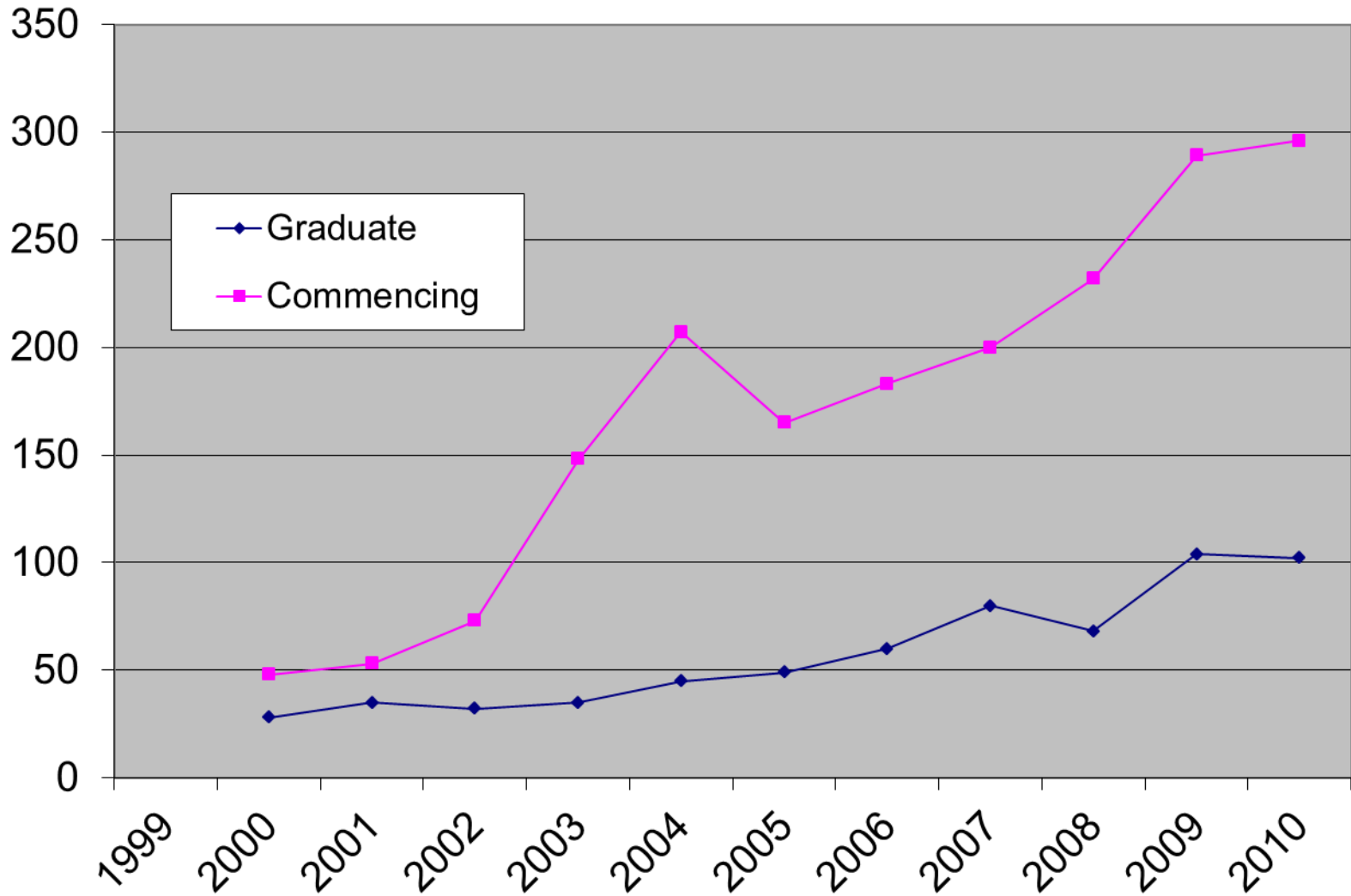
(Note: Commencing numbers incomplete - 1 uni only)



Mining Engineering Student Numbers (to end 2010)

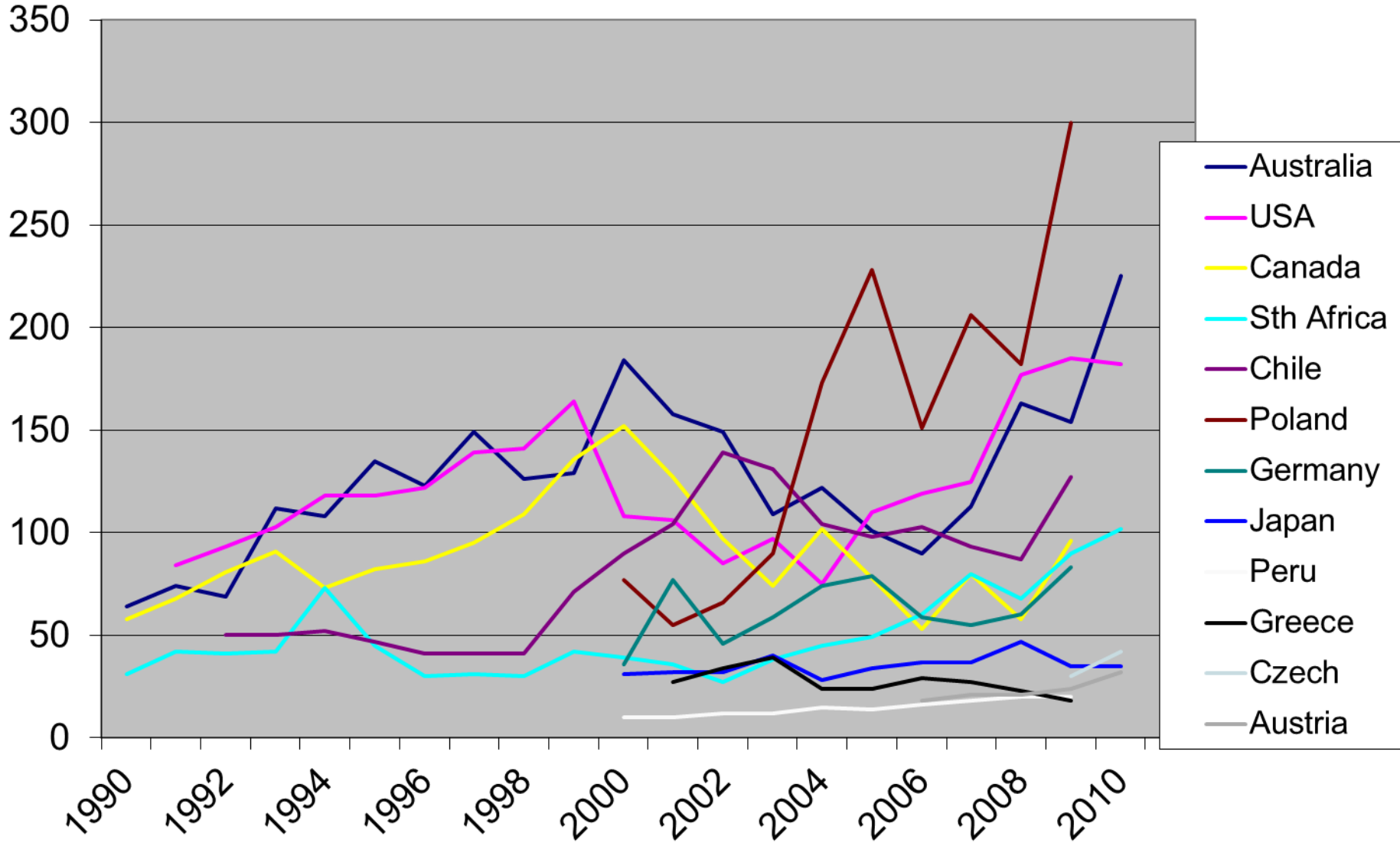
SOUTH AFRICA

(Commencing and graduate numbers)



Mining Engineering Graduate Numbers (to end 2010)

Note: Canada incomplete beyond 2005



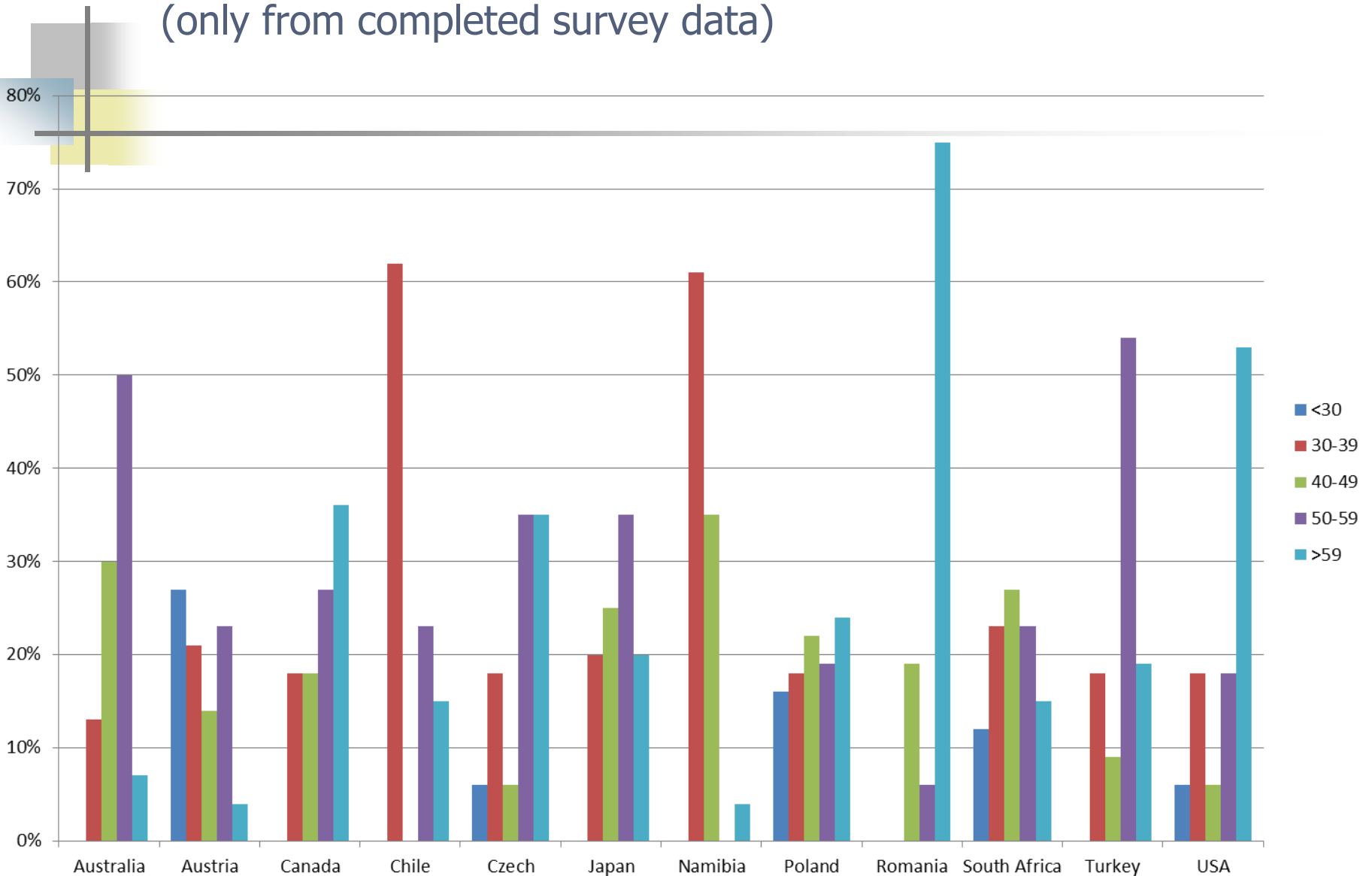


Other anecdotal evidence

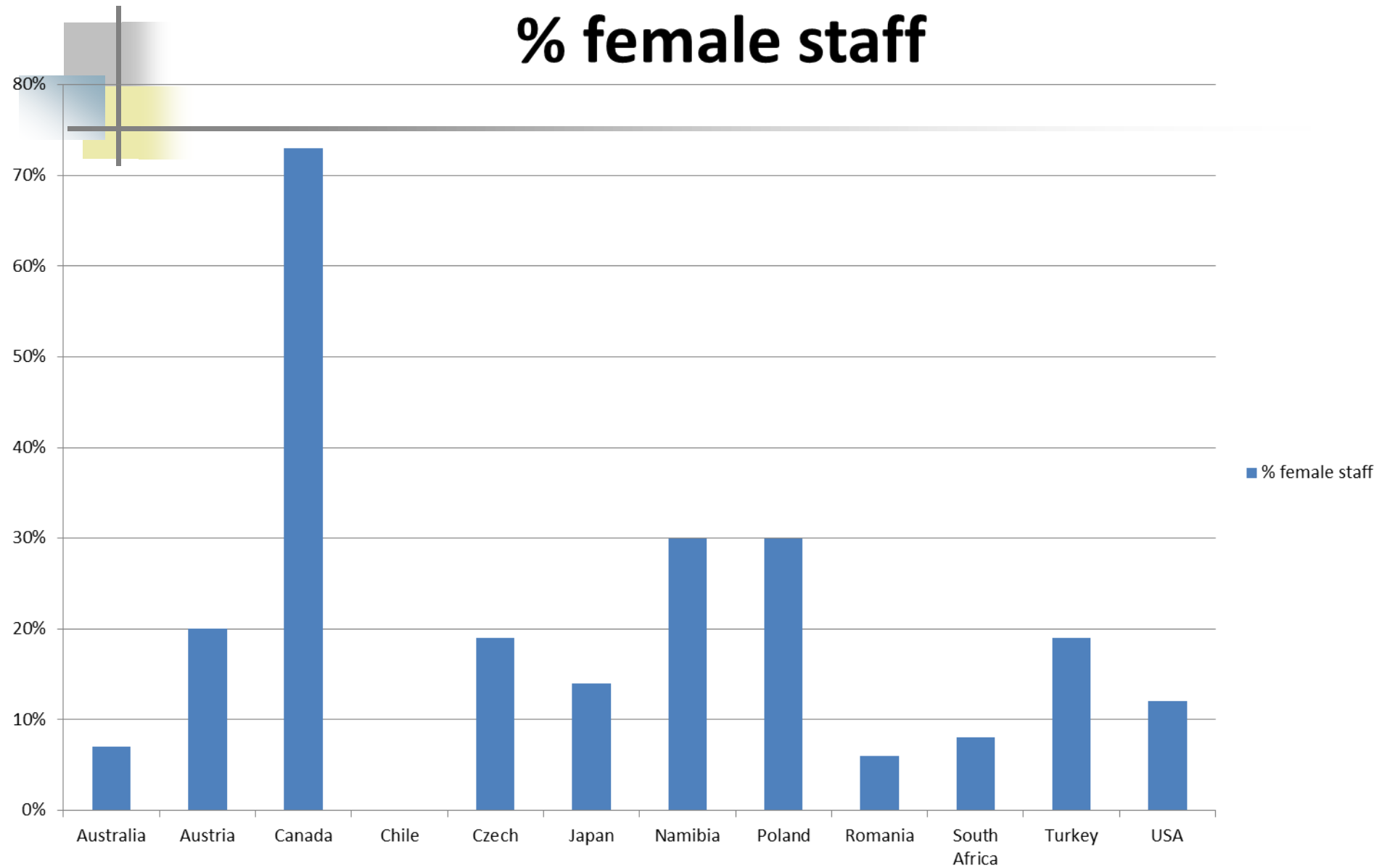
- Turkey produced 1200 graduates in 2010 from 27 departments, but 39% are unemployed
- Peru produces 600 graduates per year
- Poland graduate numbers were in excess of 600 in 2010

Staff age profiles

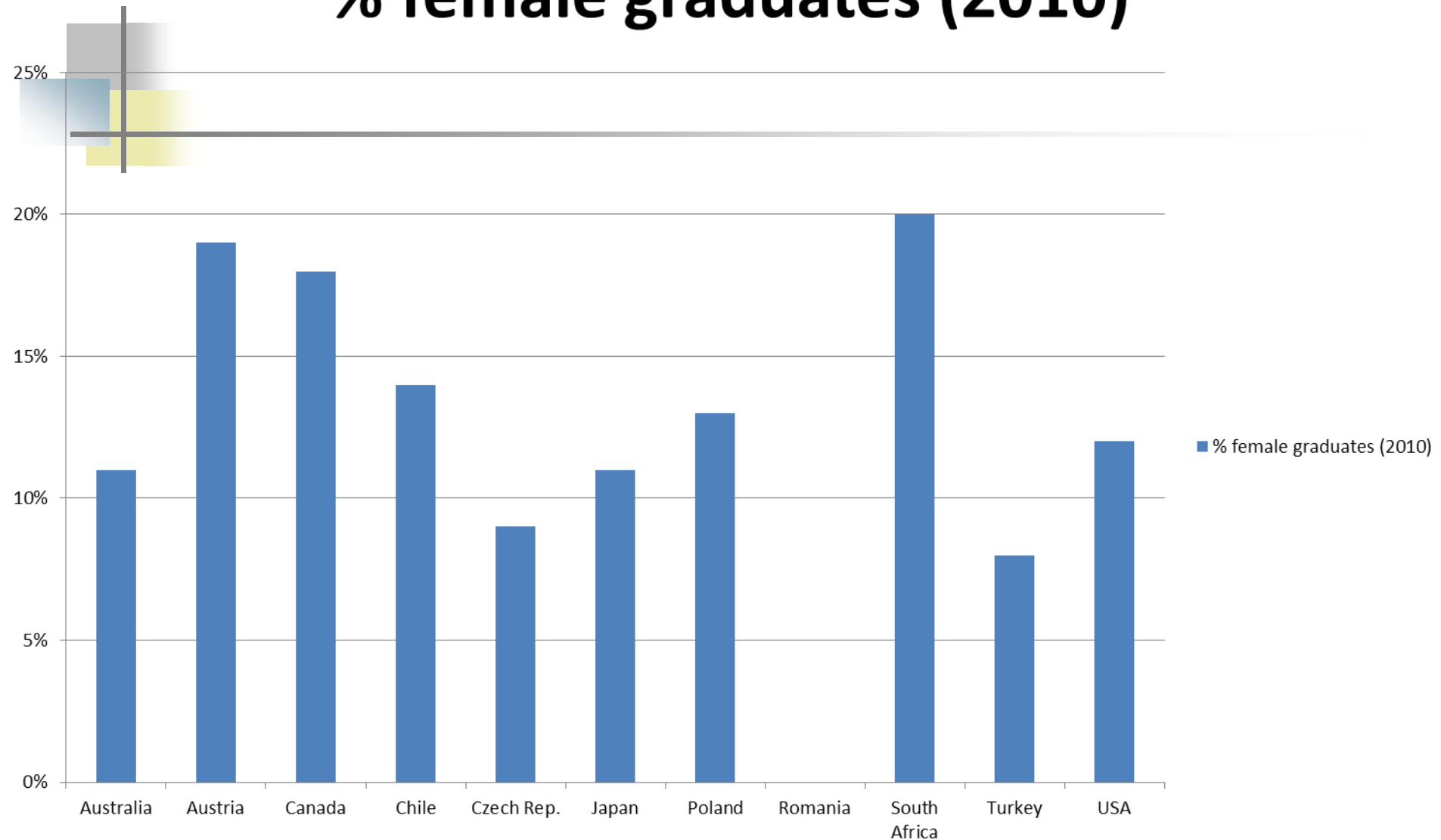
(only from completed survey data)



% female staff



% female graduates (2010)





Thank You

- Thanks to all who have responded so far
- We welcome further responses, and intend to update and report annually, with the co-operation of all participants

Bruce Hebblewhite

(on behalf of SOMP Education Committee)